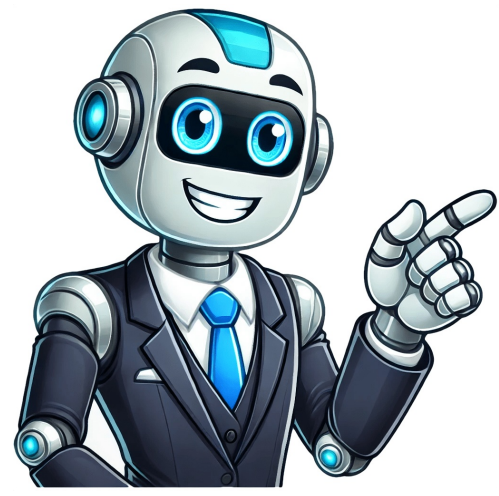


Click to verify



Sac state counseling masters

I am extremely dissapointed with CSU Sacramento. The university's representatives have made false and misrepresentative claims about the quality of education at this institution. In the past few years, CSUS has supposedly transitioned from being unranked to a Tier 1 university, which I find suspicious. Based on my encounters with their representatives, they have made serious falsified claims about the quality of their education. They compare themselves to Ivy League schools, but according to school rankings data, they are far behind in terms of quality. If students made such claims on their applications, they would be investigated and possibly terminated. The university's representatives also exhibit paranoid and antisocial behavior by being overly concerned that students might change majors or leave the program. This is a common issue in education and not something to be taken animosity towards. As a student at one of the top universities in the nation, I recommend that CSUS stop making false claims about their quality of education and instead focus on improving their university so that their representatives do not have to lie. Due to the poor representation by the university's representatives, I would estimate that the quality of education is among the worst in institutions such as CSU Long Beach. I hope for improvement and ethical behavior from the university. ... (Rest of the text remains the same) The Master of Science in Counseling program utilizes a comprehensive evaluation process consisting of two stages: initial screening through review of submitted materials and subsequent in-person evaluation through Interview Day. The latter involves a full-day interactive experience with faculty and peers, where students participate in group activities, tours, and a writing prompt to identify potential admits. Notably, students are expected to attend the program without alternative dates or arrangements due to its intensive nature. The 60-unit MS Counseling program prepares graduates for various employment settings, including public and private agencies, universities, schools, and private practice. This degree meets California's licensure requirements for Licensed Professional Clinical Counselors (LPCC) and emphasizes clinical orientation through didactic, experiential, and practicum-based courses. Students will complete the program within three years, taking 9-12 units per fall and spring semester. The cohort model fosters a supportive community among students as they advance together throughout their education. Opportunities for professional development include participation in organizations, research, presentations, and involvement with conferences such as the CSUS Multicultural Conference and Counselor Education Symposium. The rehabilitation counseling program at Sacramento State is designed to equip students with the skills to navigate complex medical, psychosocial, and environmental factors influencing disability and daily functioning. Through a comprehensive curriculum, trainees are taught to identify and implement interventions that maximize rehabilitative potential. The program includes coursework in counseling techniques, medical aspects of disability, comorbid conditions, diagnosis, and treatment planning. Students also learn about the potential for trauma and substance use disorders to co-occur with various neurological, medical, and psychological conditions. Rehabilitation Counselors are trained to consider multiple influences on an individual's ability to function in their environment, including medical, psychosocial, family, co-occurring substance use, trauma, and environmental factors. The program aims to optimize rehabilitative functioning by equipping students with the knowledge and skills necessary to address these complex issues. The program is accredited by the Council for Accreditation of Counseling and Related Educational Programs (CACREP) and is recognized by the California Board of Behavioral Sciences (BBS) for Licensed Professional Clinical Counselor (LPCC) licensure. The curriculum is designed to prepare students for certification as Certified Rehabilitation Counselors (CRC). The program offers a range of opportunities, including an on-campus Center for Counseling and Diagnostic Services that brings clients from off campus to be counseled by students in the program. Students also have the opportunity to provide counseling services in various settings, such as private and non-profit agencies, higher education settings, community mental health centers, and Veterans Affairs facilities. Faculty in the program emphasize diversity and multicultural counseling skills throughout the curriculum. Classes are offered during morning, afternoon, and evening sessions to accommodate students with varying schedules. To be admitted into the Master of Science in Counseling program, applicants must meet specific requirements, including a baccalaureate degree, good academic standing at their last college attended, and a minimum grade point average of 3.0 (on a 4.0 scale) in the last 60 semester units or 90 quarter units. Applicants must also submit an application form, written statements, copies of transcripts, recommendation forms, and relevant work experience via a Resume/CV. Participation in an In-Person Admission Evaluation may be required for selected applicants based on paper screening of completed applications. The program is designed to equip students with the skills necessary to succeed as rehabilitation counselors in various settings. With its comprehensive curriculum and range of opportunities, Sacramento State's Master of Science in Counseling program provides a solid foundation for students pursuing certification as Certified Rehabilitation Counselors (CRC) or licensure as Licensed Professional Clinical Counselor (LPCC). The Master of Science in Counseling at Sacramento State University offers a comprehensive program for aspiring counselors. The application process typically begins each fall and concludes before the spring semester, with no summer or late-semester applications accepted. To be considered, applicants must submit their university application, as well as a supplemental program application, by the specified deadline. For admission information and deadlines, prospective students are advised to visit the Office of Graduate Studies website. Official transcripts from all colleges attended, except for Sacramento State, must be submitted electronically or in paper format. The program recommends that candidates also establish communication with licensing and credentialing boards related to their specialization area. To ensure success in the program, students are strongly encouraged to maintain regular contact with their assigned faculty advisor and attend group advising sessions. Catalog rights only guarantee degree requirements; students should be aware of potential changes to course prerequisites and electives due to external factors such as licensure or certification requirements. The Master's program requires a minimum of 60 units and a cumulative GPA of 3.0. Students must also file an application for Advancement to Candidacy, which involves completing the necessary requirements and acceptable electives with a minimum 3.0 GPA. This application should be submitted upon completion of 30 units in the program, typically in the final year. As a student in the M.S. in Counseling program, it is essential to follow certain requirements and procedures to advance your studies. The Advisor will verify your progress with the Department's Graduate Coordinator and then forward it to the Office of Graduate Studies for final approval. Before submitting a Petition to Graduate, you must have an Advancement to Candidacy on file. To access important information about Counselor Education, visit the College of Education: Master's Programs Website, where you will find the Counselor Education webpage under the "Current Students" link and the Forms and Handbooks page. Program Requirements: * EDC 210Advocacy, Social Justice, and Cultural Foundations in Counseling * EDC 214Dynamics of Human Development * EDC 216Counseling Theory * EDC 218Assessment In Counseling * EDC 219Group Processes in Counseling * EDC 231Diagnosis and Treatment Planning * EDC 233Substance Use and Addiction Counseling * EDC 244Trauma and Crisis Counseling * EDC 250Education Research * EDC 252Legal and Ethical Issues in Professional Counseling * EDC 260Career Development * EDC 280Counseling Skills Lab * EDC 475Counseling Practicum * EDC 480Counseling Internship (taken twice, 3 units each) Concentration Requirements: Rehabilitation Counseling (15 Units) * EDC 239Foundations in Rehabilitation Counseling * EDC 240AMedical & Psychosocial Aspects of Disability * EDC 234Seminar: Marriage and Family Counseling * EDC 254Counseling and Psychotropic Medicine * EDC 263Advanced Case Conceptualization in Clinical Rehabilitation Culminating Requirement: * Enroll in EDC 5001 during your final semester in the program * Complete the Counselor Preparation Comprehensive Examination (CPCE) and meet the minimum criterion score set by the Counselor Education Program. For more information, please visit the Office of University Registrar at Lassen Hall, Room 2000, or explore local attractions such as McKinley Park, California State Capitol Museum, or Sacramento Zoo. Given text content remains unchanged!!! The course structure is divided into various components including fall start and estimated total program tuition which stands at \$21,528. There's no religious orientation required. The entering class size averages around 14-20 students per specialty, with a maximum of 20 applicants accepted each cycle. Fieldwork plays a significant role in the program, totaling 600 hours over time. A Fieldwork Coordinator helps place students on-site during their third year, often in partnership with local communities such as Sacramento and its surroundings. These partnerships are crucial for providing necessary supervision and experience within specific specialties. Each spring, the Counselor Education program hosts an Orientation to Fieldwork and Site Fair at the Spring Symposium. This event allows students to meet site contacts and learn about each site's population and requirements. Throughout the program, a personal psychotherapy requirement of 10 hours is mandatory for all students. The MS Counseling culminating experience involves acquiring 100 hours in practicum under faculty supervision. Additionally, over the final year, students must accumulate between 600-800 hours of community experience (under faculty and site supervision) as part of their comprehensive examination preparation, which helps prepare them for licensing exams when seeking licensure or credentialing.