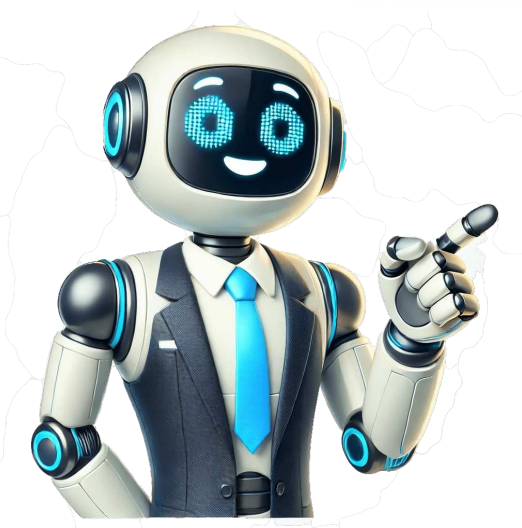


Continue



Fourplex construction blueprints, also known as construction building plans, are two-dimensional drawings that have all the details and specs needed for a 4-unit multi-family project. These drawings provide information for the general contractor, sub-contractors, and suppliers to bid and build the fourplex project. These details are also crucial for requesting permits, performing takeoffs and cost estimations, and eventually carrying out the construction itself. Depending on the project specifications, general contractors and seasoned estimators report that they spend up to 60% of their time only doing takeoffs and cost estimations. Fortunately, the use of AI estimating software in streamlining the takeoff process has led to dramatic results for construction firms. Major global construction leaders report that technology has allowed them to become more efficient and to focus on value-generating activities like pricing, scoping, and value engineering. In addition, it improved the accuracy of their takeoffs and increased the productivity of their estimators. If you're a project owner, general contractor, or a seasoned estimator looking for building plans for a fourplex construction project, then this guide is for you. We have reviewed eight 4-unit apartment building floor plans, so you can leverage them for your next multi-family building project.

1. 4 Unit Apartment Building Plans By Drummond House Plans

Blueprint Provider Description: Drummond House Plans is a website that provides simple ready-to-build house plans. They provide blueprints for a variety of projects including bungalows, cottages, vacation homes, modern houses, farmhouses, cabins, and more. According to the site, they've sold around 130,000 house plans since 1973, making them a reputable source for 2-unit apartment building plans, small 4-unit apartment building plans, and more. When you visit the site, you'll see their multi-family house plans, with 4 or more rental units, with 2 or 3 bedrooms per unit. The plan includes modern apartments with full amenities and varying designs, including a Nordic look with wood beam accents or a contemporary style. Within the site, there's also an option to filter their blueprints by plan type, number of bedrooms, number of bathrooms, architectural styles, number of floors, and other special elements. Here are some of their Fourplex Building Plans: This is a 4-unit multi-family mountain-style house plan. It consists of a modern rustic theme with a combination of stone and siding. Its floor layout is designed to maximize each floor and offer lower construction costs. Here are more details on this blueprint: Blueprint: Williston Quarters

This fourplex house plan consists of a raised basement that allows cost-effective development of lower and upper units, and rear-oriented living areas that enhance the privacy of the residents. Here are more details on this blueprint: This is an apartment building plan with 4 units, 2 bedrooms, and a laundry room in each apartment. Here are more details on this blueprint: 2. Building Designs By Stockton

Blueprint Provider Description: Building Designs by Stockton is a website that provides building designs for multi-family and commercial buildings. They also provide various house plans, garage plans, and storage plans. According to the site, they've been providing quality floor plans for over 25 years, making them a reputable source for fourplex apartment blueprints. When you visit the site, you'll see over a hundred multi-family plans for 3-4 plex buildings. The apartment plans feature varying designs such as contemporary craftsman, bungalow, victorian, traditional, colonial, Spanish/Mediterranean, and brownstone designs. The floor plans provided vary in depth and width with the narrowest units being 12'-8" wide. Here's an example of their Fourplex Building Plans: This is a two-story apartment with 4 units, a great room layout, a balcony, and a garage. Here are more details on this blueprint: 3. 4 Unit Apartment Building Plans by Family Home Plans

Blueprint Provider Description: Family Home Plans is a website that provides home designs in every style, type, and price range. They provide blueprints for a variety of projects including single-family homes, homes with a high resale value, garages, farmhouses, modern houses, country houses, and more. According to the site, they've gone through a century of doing business and working closely with homeowners, builders, home designers, and architects, making them a reputable source for quality fourplex plans. When you visit the site, you'll see their 4-unit multi-plex plans with varying designs, amenities, and aesthetics. With every available floor plan comes the specs such as size, number of beds, number of baths, and more. Like Drummond House Plans, there's also an option to filter the blueprints by size, number of bedrooms, number of bathrooms, and more. Here's an example of their Fourplex Building Plans: This multiplex has a total living area of 4,872 sq. ft. with 8 beds and 12 baths. Here are more details on this blueprint: 4. Fourplex Plans by PlanSource, Inc

Blueprint Provider Description: PlanSource, Inc is a website that provides quality blueprints fit for any need and budget. They offer a wide selection of drawings for single-family homes, duplexes, triplex, fourplex, and other multi-family apartments. They also provide modifications to the drawings at no extra charge. They also aim to keep construction costs down by designing plans that are light on material and with comfortable living spaces. According to the site, instead of being a reseller of floor plans, PlanSource, Inc is an independent company with exclusive designs. They prepare all blueprints in-house rather than providing 3rd party plans across different websites. When you visit PlanSource, Inc, you'll see their 4-unit apartment plans, with a picture of the exterior view, plan number, and description of the units. When viewing the floor plan, they provide other specs such as the size of the living area and the number of bedroom units. Here's an example of their Fourplex Building Plans: This apartment is one of PlanSource, Inc's most popular 1-story fourplex plans. It's a 3-bedroom unit with a living area of 4,150 sq. ft. Here are more details on this blueprint: 5. Custom Fourplex Building Plans by Houseplans.pro

Blueprint Provider Description: Houseplans.pro provides plans that come straight from the designers who created them, which enables the site to quickly customize the drawings depending on your needs. They provide blueprints with varying architectural styles and types. The plans they provide also fit various projects such as single-family homes, duplexes, triplex, fourplex, townhouses, and condo plans which can all be customized based on your exact specifications. According to the site, they have been providing innovative home designs since 1962. Inside, you'll see multiple custom fourplex house plans with varying designs, with some resembling row houses, while others built as single structures with divided living units. As you scroll through the various options for fourplex designs, the preview for each floor plan provides information on the plans square footage, number of bedrooms, baths, and garage stalls, as well as the width and depth of the structure. Some of the designs include Florida vernacular architectural style, modern, narrow, luxury, and more. Here's an example of their Fourplex Building Plans: Blueprint: One Level 4-Unit Multiplex F-596

This apartment is a 1-story fourplex with a 768 total sq. ft. Here are more details on this blueprint: 6. 4-Unit Building Plan by the Plan Collection

Blueprint Provider Description: The Plan Collection is a website providing over 22,000 plans. They've been online since 2002, and have been providing quality plans for various types, styles, and project sizes. Examples of styles they provide plans for are Acadian, A-Frame, beachfront, contemporary, concrete, country, luxury, Southern, and many more. The structures square footage can be anywhere below 1000 square feet, or above 5000 square feet, and can be single-family homes, duplexes, and multi-family homes. Here's an example of their Fourplex Building Plans: This specific 4-unit building floor map is 2176 sq. ft. with 2 floors and 2 units on each floor. The architectural style is a mix of multi-unit, colonial, and traditional. The exterior wall is wood siding, while the roofing type is hip made with asphalt shingles. Each unit consists of 1 bedroom. Here are more details on this blueprint: 7. Fourplex Plans by E-Designs

PlansBlueprint Provider Description: E-Designs Plans is a company with over 30 years of involvement in every aspect of the home building industry. This includes 15 years of designing homes for clients all over Canada and the US. They provide building plans for a variety of projects such as ranch-style homes, farmhouses, cottages, cabins, and more. They also provide multi-family plans such as duplex, tri-plex, 4-plex, 6-8 plex, and plans with basement suites. When you visit the site, you'll see 4-plex blueprints and other multi-family house plans. As you scroll through the various options for fourplex designs, the preview for each plan provides basic information such as the square footage, number of bedrooms, number of bathrooms, width, and depth of the structure. Upon viewing, you'll be provided with a more detailed description of the plan, including floor plans, a picture of the exterior, and details on the amenities inside. Here's an example of their Fourplex Building Plans: Here are more details on this blueprint: 8. European Fourplex by Architectural Designs

Blueprint Provider Description: Architectural Designs is a family-owned business with over 40+ years of history in helping builders and homeowners find plans fit for their needs and budgets. They provide blueprints for a variety of styles including country, modern farmhouse, new American, traditional farmhouse, craftsman, barndominium, traditional, and Southern. To navigate their website, they've provided an option to filter the plans by square footage, number of beds, number of bathrooms, and number of floors. Here's an example of their Fourplex Building Plans: Blueprint: Plan 60623ND

European Fourplex

This specific European fourplex is 7,016 heated square feet, with a width of 85' 0" and a depth of 51' 2". Because of the dining floor room bump-out, units 1 and 4 are slightly larger, being 840 square feet on the main floor and 762 square feet on the second floor. Final Words

Fourplex buildings and other multi-family housing allow more than one family to inhabit a single piece of land, making it more cost-effective for homeowners and project owners. Because of the consistent design throughout the units, it's also easier and faster to estimate and build. For fourplex construction projects, gaining access to quality blueprint designs is crucial for requesting permits, performing takeoffs, and the construction itself. When choosing the site to purchase or access fourplex building plans, it's essential to consider the following: The business expertise if the plans could be modified to fit your needs

The various building styles available

You'll need around \$419,000 to build a fourplex. But the final costs will be impacted by various factors, including materials used, inflation, site location, square footage, style, and more, and may range from \$190,000 to \$648,000. Want to speed up the takeoff and cost-estimation process of your fourplex construction project? Leverage our AI estimating software, Toga AI. With Toga AI, you can finish takeoffs in seconds with 99% accuracy. Experience how Toga AI can help finish takeoffs in seconds and increase the profitability of your fourplex construction project by booking a free demo. Stay on top of the latest trends & receive our offers and promotions!! Thank you for your newsletter subscription! By Devin Uriarte

Looking for fourplex plans with bold curb appeal and contemporary layouts? These multifamily townhome plans, each with four units, stand out. Check out our selection of fourplex house plans. See our full collection of multi-family floor plans. Fourplex Plan with Open Layout

Fourplex Plan with Open Layout - Front Exterior

Fourplex Plan with Open Layout - Main Floor

Fourplex Plan with Open Layout - Upper Floor

The exterior of this fourplex plan boasts contemporary style with its angled roofs and entryway details. More modern details can be found inside, like the open layout. Each unit has a private single-car garage that attaches to a convenient mudroom. The living and dining rooms flow seamlessly to the kitchen where there's additional storage in the walk-in pantry. Upstairs there are two guest rooms and the spacious owners suite with a private bathroom. Fourplex Plan with Garage Below

Fourplex Plan with Garage Below - Front Exterior

Fourplex Plan with Garage Below - Main Floor

Fourplex Plan with Garage Below - Upper Floor

Plan What makes this fourplex plan unique are the drive-up garages. The main living space sits on the ground floor while the bedrooms are up on the second floor. Down the hallway there's a cozy pocket office for anyone who works from home. The L-shaped kitchen opens to the dining and living room, creating a large modern space for hosting and entertaining. On the second floor there are two guest bedrooms, each with its own walk-in closet, and the owners suite. The owners suite has a great private bathroom and tons of storage. Fourplex Plan with Private Patios

Fourplex Plan with Private Patios - Front Exterior

Fourplex Plan with Private Patios - Main Floor

Fourplex Plan with Private Patios - Upper Floor

Plan Here is a fourplex plan with rugged charm. Each unit has a private rear patio that's accessed from the dining room. In the kitchen, guests can keep owners company at the built-in bar top while they are preparing meals. There are two bedrooms and two bathrooms on the second floor of each unit. Casual

Fourplex Plan

Casual Fourplex Plan - Front Exterior

Casual Fourplex Plan - Main Floor

Casual Fourplex Plan - Upper Floor

Plan The units in this fourplex plan each have a simple layout with columns between the sizeable living room and the dining area. In the living room there's a fireplace that adds to the overall cozy ambience. The guest suite and primary suite are on the second floor, and both feature a walk-in closet and private bathroom. See our full collection of multi-family floor plans. Any content, trademarks, or other material that might be found on the laoisenterprise.com website that is not laoisenterprise.com property remains the copyright of its respective owner/s. In no way does laoisenterprise.com claim ownership or responsibility for such items, and you should seek legal consent for any use of such materials from its owner. Copyright 2017 LAOISENTERPRISE.COM - All rights reserved

Most of our duplex plans and apartments can be modified or merged to create additional units. For example, "stack" a duplex to create a fourplex or add units to the side for a bigger apartment building. Feel free to browse our duplex plans to determine if this approach would suit your needs. If so, send email to get started. Note: It is the responsibility of the purchaser to verify whether they must meet ADA and/or Fair Housing requirements. Some situations may require accessible units while others may not. Please see your local building official for more information. Due to the nature of our product, we cannot honor requests for refunds or exchanges. Please feel free to send email if you have any questions or concerns. Customize one of our designs

Page 2 Modern contemporary house plans provide large windows, small or large with open floor plan and minimalist decorative trim elements and clean line designs. Page 3 Wheelchair-accessible house plans usually have wider hallways, no stairs. ADA (Americans with Disabilities Act) compliant bathrooms, and friendly for the handicapped. Page 4 When you are looking for ideas or plans for building a bonus room on your house, these floor plans offer great bonus room designs to meet your needs and styles. Page 5 When looking for house plans for small, English, country, French, beach, craftsman, coastal, or stone cottage styles, we have many designs to choose from. Page 6 Striking A-shaped houses are named for their steep, snow-shedding roof lines that extend down to the foundation. Features often found in A-Frame designs are Gable roof extending nearly to ground level, Gable end frequently features a wall of windows. Floor plans often include a loft. Often used as Vacation homes. Page 7 Corner lot properties provide the opportunity for unique home designs created with corner lots in mind. Find many house plans that fit your property layout. Page 8 Homes built on a sloping lot on a hillside allow outdoor access from a daylight basement with sliding glass or French doors, and they have great views. We have many sloping lot house plans to choose from. Page 9 Garage apartment floor plans either connected or detached. Apartments above garages allow expanding the number of bedrooms for teenagers, guests, or boarders. Page 10 Country homes come in many styles like French, English, and Ranch, but most are small, low profile, and simple in design. Plans for hill country living homes. Page 11 Find house plans with a home office. Get some layout floor plans with comfortable and functional office space. We offer creative workable ideas for a home business room. Page 12 Page 13 House plans for American country farmhouse styles provide a simple family farm traditional home with porches, decks, dormers, gables, shutters, and steep roofs. Page 14 These house plans have great rooms in their floor plan design. Great rooms usually have high ceilings and are open to a kitchen. Get ideas for your house plans. Page 15 Sign Up and See New Custom Single Family House Plans and Get the Latest Multifamily Plans, Including Our Popular Duplex House Plan Collection. Its FREE. Page 16 Building on a hillside? Sloping lots allow for daylight basements which open to the back or front yard and can have sliding glass doors to enter the walkout basement. Page 17 Garages with a studio apartment or art studio are very popular. We have several layouts for one room plans for small space apartments. Page 18 Page 19 Page 20 Page 21 These building plans provide a balance between commercial and residential spaces. Have your office, retail, or business area mixed with your living area. Page 22 Victorian house style came about during the industrial revolution. This style uses complex rooflines, round or square towers, ornamental spindles and brackets. Page 23 Pacific Northwest homes reflect a casual, comfortable lifestyle. Houses are energy efficient with quality wood work. A-Frame, Row House, Bungalow, Craftsman. Page 24 Our homes provides many amenities, a high attention to detail, well-designed comfort and accommodation, many types of rooms, fancy fittings and rich materials. Page 25 Walkout basements make good use of outdoor living space. They can add square footage without increasing its footprint. They are great for sloping lots. Page 26 Whether you want a lakefront, ocean front, sea-side, intercoastal, or beachfront house, we have the waterfront building plans for you to enjoy your water view. In today's competitive real estate market, multi-unit buildings offer a smart investment opportunity for both developers and individual homeowners. Among these, modern 4-unit apartment buildings stand out for their efficiency, functionality, and aesthetic appeal. This article explores the key considerations when designing modern 4-unit apartment building plans, providing valuable insights for architects, developers, and potential buyers.

Unit Layout and Design

Thoughtful planning is crucial for optimizing unit layouts within a 4-unit building. Each unit should boast a well-balanced and efficient floor plan that caters to the modern lifestyle. Open-plan designs foster a sense of spaciousness and natural light penetration. Incorporating flexible spaces, such as convertible guest rooms or home-office alcoves, enhances the usability and versatility of the units. Energy Efficiency and Sustainability Sustainability is a paramount consideration in modern architecture. 4-unit apartment buildings offer an ideal opportunity to implement energy-efficient measures. Incorporating features such as double-glazed windows, LED lighting, and high-efficiency appliances can significantly reduce energy consumption. Utilizing renewable energy sources, like solar panels or geothermal heating, further enhances sustainability and reduces operating costs. Amenity Integration Modern apartment buildings are no longer merely residential spaces; they offer a range of amenities to enhance tenant satisfaction. Common areas, such as a rooftop terrace, fitness center, or lounge, foster a sense of community and provide additional value to the units. Careful planning is required to seamlessly integrate these amenities into the overall building design, ensuring they complement the units' functionality and aesthetic appeal. Exterior Facade and Curb Appeal The exterior facade of a 4-unit apartment building plays a pivotal role in its overall aesthetic and curb appeal. Modern designs favor clean lines, geometric shapes, and a minimalist approach. The use of contrasting materials, such as metal, glass, and wood, adds visual interest and texture. Floor-to-ceiling windows maximize natural light and create a connection between the interior and exterior spaces. Site Planning and Landscaping The building's surrounding environment should be carefully considered in the design process. Landscaping can enhance the building's overall aesthetic appeal while providing privacy and outdoor enjoyment for tenants. Incorporating green spaces, such as courtyards or planted balconies, fosters a sense of tranquility and provides a connection to nature. Efficient parking solutions, including underground or covered parking, optimize space utilization and maintain the building's aesthetic integrity. Cost Considerations and Return on Investment When designing modern 4-unit apartment building plans, it is essential to consider both construction costs and potential return on investment. Balancing energy efficiency measures, amenity integration, and aesthetic appeal with budget limitations requires careful planning. Smart design choices, such as utilizing modular construction techniques or incorporating shared amenities, can help reduce costs without compromising quality. Conclusion Modern 4-unit apartment building plans offer a unique opportunity to create efficient, sustainable, and visually appealing residential spaces. By thoughtfully considering unit layouts, amenity integration, exterior design, site planning, and cost considerations, architects and developers can design buildings that meet the demands of modern renters while maximizing return on investment. Multi Family House Plans 4 Or More Units Drummond 4 Unit Floor Plan Multi Family House Plans 4 Or More Units Drummond View Plans Multi Family House Plans 4 Or More Units Drummond View Plans Apartment Lay Out Detail Apartment Complex Blueprints Top Building Plans For 4 Unit Apartments And Up Estimate Florida Consulting Apartment Architects Atlanta Floor Plans Building Design Architect Boye Home Ga Modern Buildings Charlotte Nc 4 Unit Multi Plex Plans Introduction Four-unit apartment buildings are a popular choice for investors and developers for various reasons. They are relatively affordable to build compared to larger apartment buildings, offer a significant return on investment, and are in high demand among renters. With careful planning and execution, a well-designed four-unit apartment building can provide a profitable and sustainable investment. Factors to Consider Before designing four-unit apartment building plans, several important factors need to be considered, including: Land size and zoning regulations: The size and zoning of the land will determine the number and size of apartment units that can be built. Target market: The design should cater to the specific needs and preferences of the target renter population. Budget: The cost of construction and materials will significantly impact the overall design and features of the building. Building codes and accessibility: The design must comply with all applicable building codes and accessibility regulations. Planning the Units The floor plan of a four-unit apartment building should be carefully planned to maximize space and efficiency. Common unit layouts include: One-bedroom units: These units are ideal for single occupants or couples. They typically feature one bedroom, one bathroom, a living area, and a kitchen. Two-bedroom units: These units are suitable for small families or roommates. They often have two bedrooms, one or two bathrooms, a living area, and a kitchen. Three-bedroom units: These units are ideal for larger families. They may include three bedrooms, two bathrooms, a living area, a dining room, and a kitchen. Amenities and Features In addition to the basic unit layouts, various amenities and features can be incorporated into the design to enhance the overall appeal of the building. These may include: Shared laundry facilities: Conveniently located laundry facilities are a desirable feature for tenants. Outdoor space: Balconies, patios, or shared green spaces can provide additional living space and enhance the building's aesthetics. Parking: Adequate parking spaces should be provided for tenants and guests. Security features: Intercom systems, security cameras, and controlled access can improve the safety and security of the building. Conclusion Designing four-unit apartment building plans requires careful consideration of various factors, including land size, zoning regulations, target market, budget, building codes, and desired amenities. By incorporating efficient unit layouts, thoughtful features, and a focus on maximizing space and appeal, architects and developers can create well-designed and profitable four-unit apartment buildings. 4 Plex Apartment Plan 0917 13M Multi Family House Plans 4 Or More Units Drummond 4 Unit Floor Plan View Plans Apartment Complex Blueprints Top Building Plans For 4 Unit Apartments And Up Estimate Florida Consulting Builder Preferred Multifamily Style House Plan 7857 Attridge House Plan 2 Bedrooms 1 Bathrooms 3044 Drummond Plans Apartment Lay Out Detail House Plan Design Ep 27 3700 Square Feet Four Unit Layout

4 apartment floor plans. 4 unit apartment building plans philippines. What is 4 unit apartment building. 4 apartment building plans. How much is a 4 unit apartment building. How many units are in an apartment building. Small apartment building plans 4 units. How much does it cost to build a 4 unit apartment complex.