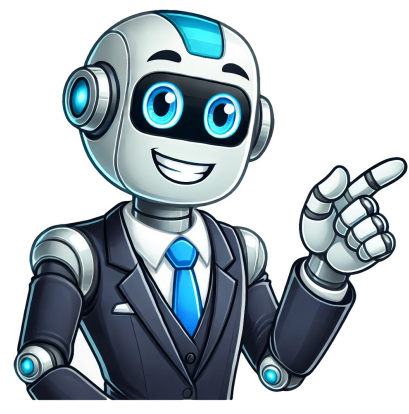


I'm not a bot



Recharge polaroid instax mini 9

L'Instax Mini 9 est l'un des appareils photo instantanés les plus populaires sur le marché. Son design rétro et ses photos instantanées en font un objet très prisé par les amateurs de photographie. Cependant, l'un des inconvénients de cet appareil est sa consommation rapide de films. Il est donc important de savoir comment recharger votre Instax Mini 9 en toute simplicité pour ne jamais manquer de films au moment crucial. Étape 1 : Choisir le bon film Avant de recharger votre Instax Mini 9, il est essentiel de choisir le bon film. Assurez-vous d'utiliser des films compatibles avec votre appareil. Les films Instax Mini sont disponibles en plusieurs formats et en différentes quantités. Veuillez à bien vérifier la compatibilité du film avec votre appareil avant de l'acheter. Étape 2 : Ouvrir le compartiment à films Pour recharger votre Instax Mini 9, commencez par ouvrir le compartiment à films situé à l'arrière de l'appareil. Pour ce faire, appuyez sur le bouton de déverrouillage et faites glisser le couvercle du compartiment vers le bas. Assurez-vous que l'appareil est éteint avant d'ouvrir le compartiment à films pour éviter tout accident. Étape 3 : Insérer le film Une fois le compartiment à films ouvert, insérez le film dans l'appareil en vous assurant d'aligner correctement les encoches du film avec les guides présents à l'intérieur du compartiment. Refermez ensuite délicatement le couvercle du compartiment à films en veillant à ce qu'il soit bien verrouillé. Étape 4 : Tirer la première photo Après avoir inséré le film, allumez votre Instax Mini 9 en appuyant sur le bouton d'alimentation. Attendez que l'objectif de l'appareil se déploie automatiquement. Ensuite, appuyez sur le déclencheur pour prendre la première photo. Cette étape permet de charger le premier film dans l'appareil et de le mettre en place pour les prochaines prises de vue. Étape 5 : Prendre des photos Une fois que vous avez chargé le film dans votre Instax Mini 9, vous pouvez commencer à prendre des photos. Assurez-vous de cadrer correctement vos sujets et de choisir les bons réglages en fonction de la luminosité ambiante. N'hésitez pas à jouer avec les différents modes de prise de vue pour obtenir des photos uniques et créatives. Étape 6 : Remplacer le film Lorsque vous avez pris toutes les photos de votre film, il est temps de le remplacer. Pour ce faire, ouvrez à nouveau le compartiment à films en suivant la même procédure que précédemment. Retirez délicatement le film utilisé et remplacez-le par un nouveau film en suivant les étapes d'insertion décrites précédemment. Refermez ensuite le couvercle du compartiment à films et vous êtes prêt à continuer à photographier. Conclusion Recharger votre Instax Mini 9 est un processus simple et rapide une fois que vous avez compris les étapes à suivre. En choisissant le bon film, en insérant correctement le film dans l'appareil et en prenant soin de suivre les étapes de remplacement du film, vous pourrez profiter pleinement de votre appareil photo instantané. N'oubliez pas de toujours avoir des films de rechange avec vous pour ne jamais manquer de moments à immortaliser. Profitez de votre Instax Mini 9 et capturez des souvenirs instantanés avec facilité et simplicité. Note : Cet article n'est pas mis à jour régulièrement et peut contenir des informations obsolètes ainsi que des erreurs. L'équipe de Rédaction est composée de rédacteurs indépendants sélectionnés pour leur capacité à communiquer des informations complètes de manière claire et concise. CPJ10B112101Film eject slot11Brightness adjustment dial2Light sensor12Power button3Flash lafence13Flash charging lamp4Viewfinder14Back cover lock5Shutter button15Film pack confirmation window6Lens/Lens cover16Back cover7Self-portrait mirror17Film counter8Lens barrel18Eyepiece9Strap book19Battery lid10Brightness indicator20Tabs (Back)Push up the battery lid lock, then slide o the battery cover.Insert two AA batteries matching the C and D polarities.Slide on the battery lid to close.1Press down the back cover lock to open the back cover.Hold both sides of the Im pack, align the yellow marks on the camera and the Im pack as indicated on the INSTAX mini Im pack instructions, then insert it straight.2Close the back cover until the back cover lock clicks into place.Press the power button to turn the camera on.The ash charging lamp on the left of the eyepiece starts blinking. (Indicates the ash is charging.)You cannot take a photo while the lamp is blinking.When the Im has been ejected (the camera stops making a sound), grasp the edge of the Im, then take it out.When you have nished taking a photo, push the lens barrel to turn the camera o.1Turn the camera toward the subject, then turn the brightness adjustment dial to move to the position (/ / /) where the lamp is lit.Every time you take a photo, the number on the Im counter decreases from "10" to re ect the number of remaining photos, and "0" is displayed when you have used up the Im pack.You can photograph objects close-up, and can photograph yourself using the self-portrait mirror.Attach the left tab on the back to the left of the lens (1), then attach the right tab (2) so that it clicks into place.Hold the camera so that the "O" mark in the view rder is on the upper right of the center of the subject (see the illustration above), then take a photo.Lift up the right side of the close-up lens positioning mark the left side (1), then detach it (2).WARNING: Do not look through the close-up lens at the sun or other strong light. Blindness or vision problems could result.Caution: Do not leave the close-up lens places exposed to strong sunlight. Personal injury or could result if the lens should accidentally concentrate the sunbeams on an object or a person. 2 Switch o the camera before you attach/detach the close-up lens. 3 Never turn the close-up lens when you attach/detach it otherwise, the tabs on the back may be broken.Hold the camera securely keeping 35 cm to 50 cm between you and the edge of the lens.Con rm the composition using the self-portrait mirror, then take a photo.Caution: * Use new alkaline batteries of the same brand/type only (AA only). * Do not use any batteries other than alkaline batteries. * Replace both batteries in the following cases: - When the red lamp on view rder lights - When no lamp lights or blinks even though the power is turned on * About 100 pictures (roughly 10 packs of INSTAX mini Im) can be taken with new batteries. * The battery performance may be reduced when it is cold. In this case, warm up the batteries to room temperature before using this camera. * Use the supplied batteries for validation.Caution* Make sure that the batteries are installed before loading the Im pack. * Avoid direct sunlight when loading the Im pack. * Do not use any Im other than FUJIFILM INSTAX mini Im. * When you load the Im pack, never press the two rectangular holes on the back. * Do not open the back cover until you have used up the Im; otherwise, the rest of the Im is exposed and turns white. The Im can no longer be used. * Never use a Im pack beyond its shelf life; otherwise, it may damage the camera. * For details, refer to the instructions and warnings on FUJIFILM INSTAX mini Im.Hold the camera, con rm the desired composition of the nal image, then press the shutter button. * Keep a distance from the subject of at least 0.6 m. The ash has an e ctive range of between 0.6 m and 2.7 m. * The subject will be out of focus using the regular lens if the distance is less than 0.6 m. Use the close-up lens for short-distance photography. Using it enables you to photograph the subject between 35 cm and 50 cm. * In short-distance photography (including photography using the provided close-up lens), the center of the subject in the view rder will be on the upper right on the actual print.Caution on holding the camera * For horizontal image, hold the camera with the ash lampface at the top. * Do not take pictures where ash photography is forbidden. * Be careful so that you nger, or the battery, do not cover the light sensor, ash lampface, ash lens, or Im ejection slot. * Do not eject the lens barrel while the camera, otherwise, the flash print may not look expected. * Look at the view rder so that the "O" mark appears in the center. * Be careful so that the Im lens surface when you press the shutter button.334256891011171914151213118169720When "0" is displayed on the Im counter, unload the Im pack following the procedure below and as indicated on the INSTAX mini Im pack instructions.Press down the back cover lock to open the back cover.Grasp the rectangular holes on the Im pack, then pull it out straight.12Rear/Vertical image Horizontal imageFilm FUJIFILM INSTAX mini FilmPicture Size 62 mm × 46 mmLens 2 components, 2 elements, f=60 mm, 1:12.7View rder Realimage f=0.37x with target spotShooting range 0.6 m and beyondShutter Speed 1/60 sec.Exposure Control Manual Switching system (LED indicator in exposure meter)Film Feeding Out AutomaticFilm Developing Time Approximately 90 seconds (Varies depending on the ambient temperature)FlashConstant firing flash (automatic light adjustment) Recycle time: 0.2 sec. to 36 sec. (when using new alkaline range: 0.6 m ~ 2.7 m)Power Supply Two AA-size 1.5V alkaline batteries Capacity: 100 shots (Approximately 10 INSTAX mini 10-pack film packs with new AA batteries)Auto power o time 5 min.Others Exposure counter (number of unexposed films), film pack confirmation windowDimensions 116 mm × 118.3 mm × 68.2 mmWeight 307 g (without batteries, strap and film pack)* Speci cations are subject to change without notice.During operationProblems Possible Causes SolutionsThe shutter release won't trip.1 The battery power is low.2 The batteries are not loaded correctly.3 Power is not turned on.4 Camera has remained idle for roughly 5 minutes with the power turned on.1 Replace the batteries with new ones.2 Load the batteries correctly.3 Press the power button to turn on the power.4 Press the power button after retracting the lens or press the shutter release button to restore the power-on state.The lamp on the view rder blinks and the shutter release won't trip.● Flash is charging.● Wait until the lamp on the brightness adjustment dial is lit without blinking.The Im pack won't load into your camera, or won't load into your camera smoothly.1 The Im pack is not properly loaded.2 You are not loading the Im pack correctly.1 Use FUJIFILM INSTAX mini Im only. (No other Im s can be used.)2 Match the yellow line on the Im pack with the yellow positioning mark in your camera. Follow the INSTAX mini Im pack instructions.All lamps on the brightness adjustment dial blink at the same time.1 The battery power is low, and it takes a long time to charge the ash.2 A more signi cant issue with your camera has occurred.● Replace the batteries with new ones while the power is turned on (when the lens is extended).IMPORTANT:Replace the batteries only while the power is turned on. If you replace the batteries while the power is turned o (when the lens is retracted), the lamps on the brightness adjustment dial blink after turning on the power even with new batteries.* When the problem is due to reason 1, the lamps on the brightness adjustment dial stop o after replacing the batteries.If the problem is due to reason 2, the lamps on the brightness adjustment dial blink even after replacing the batteries. In this case, turn o the power and remove the batteries immediately, then contact an authorized FUJIFILM repair center.The red lamp on the view rder lights up.● The battery power is low. ● Replace the batteries with new ones.Printed picturesProblems Possible Causes SolutionsThe nished print looks over exposed. (White in color)1 The method of measuring the subject brightness is unsuitable.2 Brightness adjustment dial setting is incorrect.3 The ambient temperature is low (below +5°C/+41°F).4 The background is too dark in comparison with the subject.5 The light sensor or ash sensor window is blocked.1 Point the lens toward the center of the subject and measure the subject brightness.2 While pointing the lens toward the subject, turn the brightness adjustment dial to set the brightness to that for which the lamp lights.3 Before taking pictures, place your camera in a warm place to bring it to room temperature.4 Turn the brightness adjustment dial one step toward the direction.5 When taking a picture, be careful not to cover the two small windows next to the ash on the camera.The nished print looks under exposed. (Dark)1 The method of measuring the subject brightness is unsuitable.2 Brightness adjustment dial setting is incorrect.3 The ambient temperature is high (above +40°C/+104°F).4 The picture was taken with direct light in front of you.5 The ash lampface was blocked.6 The background is too bright in comparison with the subject.7 The ash is re ected back from a mirror or window glass.9 Grasping the lens barrel did not let the shutter work properly.1 Point the lens toward the center of the subject and measure the subject brightness.2 While pointing the lens toward the subject, turn the brightness adjustment dial to set the brightness to that for which the brightness adjustment dial lamp lights.3 Before taking pictures, place your camera in a cool place. When the picture comes out from your camera, keep it away from places or objects with excessively high temperature.4 Take a picture with the light behind you, or turn the brightness adjustment dial one step toward the direction.5 When holding your camera, be careful not to block the ash lampface with your nger or strap.6 Turn the brightness adjustment dial one step toward the direction.7 Take pictures within 0.6 m to 2.7 m from the subject.8 Adjust your position in taking the picture away from the mirror or window glass.9 Do not grasp the lens barrel when you take pictures.The picture is out of focus.1 The shooting range is too close to the subject.2 The lens is not clean.3 Your camera was shaken when taking pictures.1 Take pictures with a distance of at least 0.6 m between you and your subject.2 Clean the lens.3 Hold your camera rmly and press the shutter release button gently.The picture is blurred.1 Picture was not permitted to develop without touching, pressure being applied or other interference once it ejected from the camera.2 The picture did not come out smoothly.1 Do not press onto or fold the picture.2 Do not block the Im exit with your nger.The subject in the view rder has shifted in nished print.● The shooting range is too close to the subject.● Take pictures with a distance of at least 0.6 m between you and your subject.This product has been designed with safety in mind, and to provide safe service when handled correctly and in accordance with the User's Guide and instructions. It is important that both the product and the INSTAX Im are handled properly and used only to take pictures as instructed in this User's Guide and in the INSTAX Im instructions. For your ease and safety, please follow what is written in this User's Guide. It is also a good idea to keep the User's Guide in a safe, easy to nd place where you can refer to it if needed. WARNING:This symbol indicates danger, which could result in injury or death. Please follow these instructions.WARNING: Never attempt to take this product apart. There is a danger of an electric shock. If this product is dropped or damaged so that the inside is showing, do not touch it. There is danger of an electric shock. If the camera or the batteries inside become hot, begin to smoke, make a burning smell or show any sign of unusual condition, remove the batteries right away. Use gloves to keep from burning your hands. Not removing batteries could result in burns or re. Using a ash too close to a person's eyes may for the short term a ect the eyesight. Take care when taking picture of infants and young children. If your camera gets wet or if something such as pieces of metal get inside, remove the batteries right away to avoid heat buildup or a re starting inside the camera. Do not use this camera in places where there is amammable gas or near open gasoline, benzene, paint thinner or other unstable substances which can give o dangerous vapors. Doing so could result in explosion or re. Store your camera out of the reach of infants and young children. Failure to do this could result in serious injury. (For example, the strap could become wrapped around a child's neck and cause choking.) Never take apart the batteries. Do not subject them to heat, throw them into an open re, or attempt to short-circuit them. Doing so could result in the batteries exploding or splitting open causing burns or re. Only use speci ed batteries in this product. Use of incorrect type of batteries could cause explosion. Dispose of used batteries according to battery disposal instructions.Make sure batteries are stored in a safe, secure place and well out of the reach of any infants, young children or pets. Improper storage could result in a child swallowing a battery. (If a child swallows a battery, call a doctor or a hospital right away.) Do not look through the close-up lens at the sun or other strong light. Blindness or vision problems could result. Never get this product wet or handle it with wet hands. Doing so may result in an electric shock. Never take ash photographs of people riding bicycles, driving cars or riding a horse. The ash can distract the driver and frighten the animal, possibly causing an accident. Make sure that the battery C and D polarities are installed correctly in the camera. A damaged battery or electrolyte leakage may cause a re, injury, and contaminate the environment. Do not touch moving parts inside the camera. You may be injured. When using the camera, make sure that the battery cover is attached; otherwise, you may be injured. Do not leave the close-up lens in places exposed to strong sunlight. Personal injury or re could result if the lens should accidentally concentrate the sunbeams on an object or a person. Do not swing around the camera. You may be injured.The "CE" mark certifies that this product satis es the requirements of the EU (European Union) regarding safety, public health, environment and consumer protection. ("CE" is the abbreviation of Conformité Européenne.)For customers in Turkey:EEE Complies with Directive.For customers in the USA:FCC StatementThis device complies with part 15 of the FCC Rules. Operation is subject to the following two conditions: (1) This device may not cause harmful interference, and (2) this device must accept any interference received, including interference that may cause undesired operation.CAUTIONThis equipment has been tested and found to comply with the limits for a Class B digital device, pursuant to Part 15 of the FCC Rules. These limits are designed to provide reasonable protection against harmful interference in a residential installation. This equipment generates, uses, and can radiate radio frequency energy and, if not installed and used in accordance with the instruc-tions, may cause harmful interference to radio communications. However, there is no guarantee that interference will not occur in a particular installation. If this equipment does cause harmful interference to radio or television, which can be determined by turn-ing the equipment o and, the user is encouraged to try to correct the interference by one or more of the following measures:•Reorient or relocate the receiving antenna•Increase the separation between the equipment and receiver•Connect the equipment into an outlet on a circuit di erent from that to which the receiver id connected•Consult the dealer or an experienced radio/TV technician for helpChanges or modi cations not expressly approved by FUJIFILM responsible for compliance could void the user's warranty to operate the equipment. FUJIFILM Corporation in Canada:CAUTION: This Class B digital apparatus complies with Canadian ICES-003 Disposal of Electric and Electronic Equipment in Private HouseholdsDisposal of used Electrical & Electronic Equipment (Applicable in the European Union and other European countries with separate collection systems)This symbol on the product, or in the manual and in the warranty, and/or on its packaging indicates that this product shall not be treated as household waste.Instead it should be taken to an applicable collection point for the recycling of electrical and electronic equipment. By ensuring this product is disposed of correctly, you will help prevent potential negative consequences to the environment and human health, which could otherwise be caused by inappropriate waste handling of this product.If your equipment contains easily removable batteries or accumulators, please dispose these separately according to your local requirements. The recycling of materials will help to conserve natural resources. For more detailed information about recycling of this product, please contact your local city o or, your household waste disposal service or the shop where you have purchased the product.In Countries outside of EU: If you wish to discard this product, please contact your local authorities and ask for the correct way of disposal.CAMERA CARE1 Your camera is a precision instrument. Do not get it wet or drop it. Also, do not expose to sand.2 Do not use a strap made for cellular phones or other similar electronic products. These straps are usually too weak to hold your camera securely. For safety, use only straps designed for your camera, and use only as speci cally intended and instructed.3 If you are not using your camera for a long interval, unload the batteries and keep it where it will be safe from heat, dust, and moisture.4 Remove soil and dust from the lens, view rder window, etc. with an air blower and by wiping lightly with a piece of soft cloth.5 Do not use solvent such as thinner and alcohol to remove soil.6 Keep the Im chamber and camera interior clean to avoid damaging lms.7 In hot weather, do not leave your camera in a closed car or on the beach, and do not leave it in moist places.8 Moth repellent gas such as naphthalene adversely a ects your camera and avoid keeping your camera and film in a chest with mothballs.9 Your camera should be protected from moisture and humidity by keeping it in a dry container.10 Do not use the camera in a shower or near a swimming pool.11 Do not use the camera in a place where there is a strong magnetic field.12 Do not use the camera in a place where there is a strong electric field.13 Do not use the camera in a place where there is a strong electromagnetic field.14 Do not use the camera in a place where there is a strong radio frequency field.15 Do not use the camera in a place where there is a strong microwave field.16 Do not use the camera in a place where there is a strong infrared radiation.17 Do not use the camera in a place where there is a strong ultraviolet radiation.18 Do not use the camera in a place where there is a strong X-ray radiation.19 Do not use the camera in a place where there is a strong gamma radiation.20 Do not use the camera in a place where there is a strong neutron radiation.21 Do not use the camera in a place where there is a strong cosmic radiation.22 Do not use the camera in a place where there is a strong gravitational field.23 Do not use the camera in a place where there is a strong magnetic field.24 Do not use the camera in a place where there is a strong electric field.25 Do not use the camera in a place where there is a strong electromagnetic field.26 Do not use the camera in a place where there is a strong radio frequency field.27 Do not use the camera in a place where there is a strong microwave field.28 Do not use the camera in a place where there is a strong infrared radiation.29 Do not use the camera in a place where there is a strong ultraviolet radiation.30 Do not use the camera in a place where there is a strong X-ray radiation.31 Do not use the camera in a place where there is a strong gamma radiation.32 Do not use the camera in a place where there is a strong neutron radiation.33 Do not use the camera in a place where there is a strong cosmic radiation.34 Do not use the camera in a place where there is a strong gravitational field.35 Do not use the camera in a place where there is a strong magnetic field.36 Do not use the camera in a place where there is a strong electric field.37 Do not use the camera in a place where there is a strong electromagnetic field.38 Do not use the camera in a place where there is a strong radio frequency field.39 Do not use the camera in a place where there is a strong microwave field.40 Do not use the camera in a place where there is a strong infrared radiation.41 Do not use the camera in a place where there is a strong ultraviolet radiation.42 Do not use the camera in a place where there is a strong X-ray radiation.43 Do not use the camera in a place where there is a strong gamma radiation.44 Do not use the camera in a place where there is a strong neutron radiation.45 Do not use the camera in a place where there is a strong cosmic radiation.46 Do not use the camera in a place where there is a strong gravitational field.47 Do not use the camera in a place where there is a strong magnetic field.48 Do not use the camera in a place where there is a strong electric field.49 Do not use the camera in a place where there is a strong electromagnetic field.50 Do not use the camera in a place where there is a strong radio frequency field.51 Do not use the camera in a place where there is a strong microwave field.52 Do not use the camera in a place where there is a strong infrared radiation.53 Do not use the camera in a place where there is a strong ultraviolet radiation.54 Do not use the camera in a place where there is a strong X-ray radiation.55 Do not use the camera in a place where there is a strong gamma radiation.56 Do not use the camera in a place where there is a strong neutron radiation.57 Do not use the camera in a place where there is a strong cosmic radiation.58 Do not use the camera in a place where there is a strong gravitational field.59 Do not use the camera in a place where there is a strong magnetic field.60 Do not use the camera in a place where there is a strong electric field.61 Do not use the camera in a place where there is a strong electromagnetic field.62 Do not use the camera in a place where there is a strong radio frequency field.63 Do not use the camera in a place where there is a strong microwave field.64 Do not use the camera in a place where there is a strong infrared radiation.65 Do not use the camera in a place where there is a strong ultraviolet radiation.66 Do not use the camera in a place where there is a strong X-ray radiation.67 Do not use the camera in a place where there is a strong gamma radiation.68 Do not use the camera in a place where there is a strong neutron radiation.69 Do not use the camera in a place where there is a strong cosmic radiation.70 Do not use the camera in a place where there is a strong gravitational field.71 Do not use the camera in a place where there is a strong magnetic field.72 Do not use the camera in a place where there is a strong electric field.73 Do not use the camera in a place where there is a strong electromagnetic field.74 Do not use the camera in a place where there is a strong radio frequency field.75 Do not use the camera in a place where there is a strong microwave field.76 Do not use the camera in a place where there is a strong infrared radiation.77 Do not use the camera in a place where there is a strong ultraviolet radiation.78 Do not use the camera in a place where there is a strong X-ray radiation.79 Do not use the camera in a place where there is a strong gamma radiation.80 Do not use the camera in a place where there is a strong neutron radiation.81 Do not use the camera in a place where there is a strong cosmic radiation.82 Do not use the camera in a place where there is a strong gravitational field.83 Do not use the camera in a place where there is a strong magnetic field.84 Do not use the camera in a place where there is a strong electric field.85 Do not use the camera in a place where there is a strong electromagnetic field.86 Do not use the camera in a place where there is a strong radio frequency field.87 Do not use the camera in a place where there is a strong microwave field.88 Do not use the camera in a place where there is a strong infrared radiation.89 Do not use the camera in a place where there is a strong ultraviolet radiation.90 Do not use the camera in a place where there is a strong X-ray radiation.91 Do not use the camera in a place where there is a strong gamma radiation.92 Do not use the camera in a place where there is a strong neutron radiation.93 Do not use the camera in a place where there is a strong cosmic radiation.94 Do not use the camera in a place where there is a strong gravitational field.95 Do not use the camera in a place where there is a strong magnetic field.96 Do not use the camera in a place where there is a strong electric field.97 Do not use the camera in a place where there is a strong electromagnetic field.98 Do not use the camera in a place where there is a strong radio frequency field.99 Do not use the camera in a place where there is a strong microwave field.100 Do not use the camera in a place where there is a strong infrared radiation.101 Do not use the camera in a place where there is a strong ultraviolet radiation.102 Do not use the camera in a place where there is a strong X-ray radiation.103 Do not use the camera in a place where there is a strong gamma radiation.104 Do not use the camera in a place where there is a strong neutron radiation.105 Do not use the camera in a place where there is a strong cosmic radiation.106 Do not use the camera in a place where there is a strong gravitational field.107 Do not use the camera in a place where there is a strong magnetic field.108 Do not use the camera in a place where there is a strong electric field.109 Do not use the camera in a place where there is a strong electromagnetic field.110 Do not use the camera in a place where there is a strong radio frequency field.111 Do not use the camera in a place where there is a strong microwave field.112 Do not use the camera in a place where there is a strong infrared radiation.113 Do not use the camera in a place where there is a strong ultraviolet radiation.114 Do not use the camera in a place where there is a strong X-ray radiation.115 Do not use the camera in a place where there is a strong gamma radiation.116 Do not use the camera in a place where there is a strong neutron radiation.117 Do not use the camera in a place where there is a strong cosmic radiation.118 Do not use the camera in a place where there is a strong gravitational field.119 Do not use the camera in a place where there is a strong magnetic field.120 Do not use the camera in a place where there is a strong electric field.121 Do not use the camera in a place where there is a strong electromagnetic field.122 Do not use the camera in a place where there is a strong radio frequency field.123 Do not use the camera in a place where there is a strong microwave field.124 Do not use the camera in a place where there is a strong infrared radiation.125 Do not use the camera in a place where there is a strong ultraviolet radiation.126 Do not use the camera in a place where there is a strong X-ray radiation.127 Do not use the camera in a place where there is a strong gamma radiation.128 Do not use the camera in a place where there is a strong neutron radiation.129 Do not use the camera in a place where there is a strong cosmic radiation.130 Do not use the camera in a place where there is a strong gravitational field.131 Do not use the camera in a place where there is a strong magnetic field.132 Do not use the camera in a place where there is a strong electric field.133 Do not use the camera in a place where there is a strong electromagnetic field.134 Do not use the camera in a place where there is a strong radio frequency field.135 Do not use the camera in a place where there is a strong microwave field.136 Do not use the camera in a place where there is a strong infrared radiation.137 Do not use the camera in a place where there is a strong ultraviolet radiation.138 Do not use the camera in a place where there is a strong X-ray radiation.139 Do not use the camera in a place where there is a strong gamma radiation.140 Do not use the camera in a place where there is a strong neutron radiation.141 Do not use the camera in a place where there is a strong cosmic radiation.142 Do not use the camera in a place where there is a strong gravitational field.143 Do not use the camera in a place where there is a strong magnetic field.144 Do not use the camera in a place where there is a strong electric field.145 Do not use the camera in a place where there is a strong electromagnetic field.146 Do not use the camera in a place where there is a strong radio frequency field.147 Do not use the camera in a place where there is a strong microwave field.148 Do not use the camera in a place where there is a strong infrared radiation.149 Do not use the camera in a place where there is a strong ultraviolet radiation.150 Do not use the camera in a place where there is a strong X-ray radiation.151 Do not use the camera in a place where there is a strong gamma radiation.152 Do not use the camera in a place where there is a strong neutron radiation.153 Do not use the camera in a place where there is a strong cosmic radiation.154 Do not use the camera in a place where there is a strong gravitational field.155 Do not use the camera in a place where there is a strong magnetic field.156 Do not use the camera in a place where there is a strong electric field.157 Do not use the camera in a place where there is a strong electromagnetic field.158 Do not use the camera in a place where there is a strong radio frequency field.159 Do not use the camera in a place where there is a strong microwave field.160 Do not use the camera in a place where there is a strong infrared radiation.161 Do not use the camera in a place where there is a strong ultraviolet radiation.162 Do not use the camera in a place where there is a strong X-ray radiation.163 Do not use the camera in a place where there is a strong gamma radiation.164 Do not use the camera in a place where there is a strong neutron radiation.165 Do not use the camera in a place where there is a strong cosmic radiation.166 Do not use the camera in a place where there is a strong gravitational field.167 Do not use the camera in a place where there is a strong magnetic field.168 Do not use the camera in a place where there is a strong electric field.169 Do not use the camera in a place where there is a strong electromagnetic field.170 Do not use the camera in a place where there is a strong radio frequency field.171 Do not use the camera in a place where there is a strong microwave field.172 Do not use the camera in a place where there is a strong infrared radiation.173 Do not use the camera in a place where there is a strong ultraviolet radiation.174 Do not use the camera in a place where there is a strong X-ray radiation.175 Do not use the camera in a place where there is a strong gamma radiation.176 Do not use the camera in a place where there is a strong neutron radiation.177 Do not use the camera in a place where there is a strong cosmic radiation.178 Do not use the camera in a place where there is a strong gravitational field.179 Do not use the camera in a place where there is a strong magnetic field.180 Do not use the camera in a place where there is a strong electric field.181 Do not use the camera in a place where there is a strong electromagnetic field.182 Do not use the camera in a place where there is a strong radio frequency field.183 Do not use the camera in a place where there is a strong microwave field.184 Do not use the camera in a place where there is a strong infrared radiation.185 Do not use the camera in a place where there is a strong ultraviolet radiation.186 Do not use the camera in a place where there is a strong X-ray radiation.187 Do not use the camera in a place where there is a strong gamma radiation.188 Do not use the camera in a place where there is a strong neutron radiation.189 Do not use the camera in a place where there is a strong cosmic radiation.190 Do not use the camera in a place where there is a strong gravitational field.191 Do not use the camera in a place where there is a strong magnetic field.192 Do not use the camera in a place where there is a strong electric field.193 Do not use the camera in a place where there is a strong electromagnetic field.194 Do not use the camera in a place where there is a strong radio frequency field.195 Do not use the camera in a place where there is a strong microwave field.196 Do not use the camera in a place where there is a strong infrared radiation.197 Do not use the camera in a place where there is a strong ultraviolet radiation.198 Do not use the camera in a place where there is a strong X-ray radiation.199 Do not use the camera in a place where there is a strong gamma radiation.200 Do not use the camera in a place where there is a strong neutron radiation.201 Do not use the camera in a place where there is a strong cosmic radiation.202 Do not use the camera in a place where there is a strong gravitational field.203 Do not use the camera in a place where there is a strong magnetic field.204 Do not use the camera in a place where there is a strong electric field.205 Do not use the camera in a place where there is a strong electromagnetic field.206 Do not use the camera in a place where there is a strong radio frequency field.207 Do not use the camera in a place where there is a strong microwave field.208 Do not use the camera in a place where there is a strong infrared radiation.209 Do not use the camera in a place where there is a strong ultraviolet radiation.210 Do not use the camera in a place where there is a strong X-ray radiation.211 Do not use the camera in a place where there is a strong gamma radiation.212 Do not use the camera in a place where there is a strong neutron radiation.213 Do not use the camera in a place where there is a strong cosmic radiation.214 Do not use the camera in a place where there is a strong gravitational field.215 Do not use the camera in a place where there is a strong magnetic field.216 Do not use the camera in a place where there is a strong electric field.217 Do not use the camera in a place where there is a strong electromagnetic field.218 Do not use the camera in a place where there is a strong radio frequency field.219 Do not use the camera in a place where there is a strong microwave field.220 Do not use the camera in a place where there is a strong infrared radiation.221 Do not use the camera in a place where there is a strong ultraviolet radiation.222 Do not use the camera in a place where there is a strong X-ray radiation.223 Do not use the camera in a place where there is a strong gamma radiation.224 Do not use the camera in a place where there is a strong neutron radiation.225 Do not use the camera in a place where there is a strong cosmic radiation.226 Do not use the camera in a place where there is a strong gravitational field.227 Do not use the camera in a place where there is a strong magnetic field.228 Do not use the camera in a place where there is a strong electric field.229 Do not use the camera in a place where there is a strong electromagnetic field.230 Do not use the camera in a place where there is a strong radio frequency field.231 Do not use the camera in a place where there is a strong microwave field.232 Do not use the camera in a place where there is a strong infrared radiation.233 Do not use the camera in a place where there is a strong ultraviolet radiation.234 Do not use the camera in a place where there is a strong X-ray radiation.235 Do not use the camera in a place where there is a strong gamma radiation.236 Do not use the camera in a place where there is a strong neutron radiation.237 Do not use the camera in a place where there is a strong cosmic radiation.238 Do not use the camera in a place where there is a strong gravitational field.239 Do not use the camera in a place where there is a strong magnetic field.240 Do not use the camera in a place where there is a strong electric field.241 Do not use the camera in a place where there is a strong electromagnetic field.242 Do not use the camera in a place where there is a strong radio frequency field.243 Do not use the camera in a place where there is a strong microwave field.244 Do not use the camera in a place where there is a strong infrared radiation.245 Do not use the camera in a place where there is a strong ultraviolet radiation.246 Do not use the camera in a place where there is a strong X-ray radiation.247 Do not use the camera in a place where there is a strong gamma radiation.248 Do not use the camera in a place where there is a strong neutron radiation.249 Do not use the camera in a place where there is a strong cosmic radiation.250 Do not use the camera in a place where there is a strong gravitational field.251 Do not use the camera in a place where there is a strong magnetic field.252 Do not use the camera in a place where there is a strong electric field.253 Do not use the camera in a place where there is a strong electromagnetic field.254 Do not use the camera in a place where there is a strong radio frequency field.255 Do not use the camera in a place where there is a strong microwave field.256 Do not use the camera in a place where there is a strong infrared radiation.257 Do not use the camera in a place where there is a strong ultraviolet radiation.258 Do not use the camera in a place where there is a strong X-ray radiation.259 Do not use the camera in a place where there is a strong gamma radiation.260 Do not use the camera in a place where there is a strong neutron radiation.261 Do not use the camera in a place where there is a strong cosmic radiation.262 Do not use the camera in a place where there is a strong gravitational field.263 Do not use the camera in a place where there is a strong magnetic field.264 Do not use the camera in a place where there is a strong electric field.265 Do not use the camera in a place where there is a strong electromagnetic field.266 Do not use the camera in a place where there is a strong radio frequency field.267 Do not use the camera in a place where there is a strong microwave field.268 Do not use the camera in a place where there is a strong infrared radiation.269 Do not use the camera in a place where there is a strong ultraviolet radiation.270 Do not use the camera in a place where there is a strong X-ray radiation.271 Do not use the camera in a place where there is a strong gamma radiation.272 Do not use the camera in a place where there is a strong neutron radiation.273 Do not use the camera in a place where there is a strong cosmic radiation.274 Do not use the camera in a place where there is a strong gravitational field.275 Do not use the camera in a place where there is a strong magnetic field.276 Do not use the camera in a place where there is a strong electric field.277 Do not use the camera in a place where there is a strong electromagnetic field.278 Do not use the camera in a place where there is a strong radio frequency field.279 Do not use the camera in a place where there is a strong microwave field.280 Do not use the camera in a place where there is a strong infrared radiation.281 Do not use the camera in a place where there is a strong ultraviolet radiation.282 Do not use the camera in a place where there is a strong X-ray radiation.283 Do not use the camera in a place where there is a strong gamma radiation.284 Do not use the camera in a place where there is a strong neutron radiation.285 Do not use the camera in a place where there is a strong cosmic radiation.286 Do not use the camera in a place where there is a strong gravitational field.287 Do not use the camera in a place where there is a strong magnetic field.288 Do not use the camera in a place where there is a strong electric field.289 Do not use the camera in a place where there is a strong electromagnetic field.290 Do not use the camera in a place where there is a strong radio frequency field.291 Do not use the camera in a place where there is a strong microwave field.292 Do not use the camera in a place where there is a strong infrared radiation.293 Do not use the camera in a place where there is a strong ultraviolet radiation.294 Do not use the camera in a place where there is a strong X-ray radiation.295 Do not use the camera in a place where there is a strong gamma radiation.296 Do not use the camera in a place where there is a strong neutron radiation.297 Do not use the camera in a place where there is a strong cosmic radiation.298 Do not use the camera in a place where there is a strong gravitational field.299 Do not use the camera in a place where there is a strong magnetic field.300 Do not use the camera in a place where there is a strong electric field.301 Do not use the camera in a place where there is a strong electromagnetic field.302 Do not use the camera in a place where there is a strong radio frequency field.303 Do not use the camera in a place where there is a strong microwave field.304 Do not use the camera in a place where there is a strong infrared radiation.305 Do not use the camera in a place where there is a strong ultraviolet radiation.306 Do not use the camera in a place where there is a strong X-ray radiation.307 Do not use the camera in a place where there is a strong gamma radiation.308 Do not use the camera in a place where there is a strong neutron radiation.309 Do not use the camera in a place where there is a strong cosmic radiation.310 Do not use the camera in a place where there is a strong gravitational field.311 Do not use the camera in a place where there is a strong magnetic field.312 Do not use the camera in a place where there is a strong electric field.313 Do not use the camera in a place where there is a strong electromagnetic field.314 Do not use the camera in a place where there is a strong radio frequency field.315 Do not use the camera in a place where there is a strong microwave field.316 Do not use the camera in a place where there is a strong infrared radiation.317 Do not use the camera in a place where there is a strong ultraviolet radiation.318 Do not use the camera in a place where there is a strong X-ray radiation.319 Do not use the camera in a place where there is a strong gamma radiation.320 Do not use the camera in a place where there is a strong neutron radiation.321 Do not use the camera in a place where there is a strong cosmic radiation.322 Do not use the camera in a place where there is a strong gravitational field.323 Do not use the camera in a place where there is a strong magnetic field.324 Do not use the camera in a place where there is a strong electric field.325 Do not use the camera in a place where there is a strong electromagnetic field.326 Do not use the camera in a place where there is a strong radio frequency field.327 Do not use the camera in a place where there is a strong microwave field.328 Do not use the camera in a place where there is a strong infrared radiation.329 Do not use the camera in a place where there is a strong ultraviolet radiation.330 Do not use the camera in a place where there is a strong X-ray radiation.331 Do not use the camera in a place where there is a strong gamma radiation.332 Do not use the camera in a place where there is a strong neutron radiation.333 Do not use the camera in a place where there is a strong cosmic radiation.334 Do not use the camera in a place where there is a strong gravitational field.335 Do not use the camera in a place where there is a strong magnetic field.336 Do not use the camera in a place where there is a strong electric field.337 Do not use the camera in a place where there is a strong electromagnetic field.338 Do not use the camera in a place where there is a strong radio frequency field.339 Do not use the camera in a place where there is a strong microwave field.340 Do not use the camera in a place where there is a strong infrared radiation.341 Do not use the camera in a place where there is a strong ultraviolet radiation.342 Do not use the camera in a place where there is a strong X-ray radiation.343 Do not use the camera in a place where there is a strong gamma radiation.344 Do not use the camera in a place where there is a strong neutron radiation.345 Do not use the camera in a place where there is a strong cosmic radiation.346 Do not use the camera in a place where there is a strong gravitational field.347 Do not use the camera in a place where there is a strong magnetic field.348 Do not use the camera in a place where there is a strong electric field.349 Do not use the camera in a place where there is a strong electromagnetic field.350 Do not use the camera in a place where there is a strong radio frequency field.351 Do not use the camera in a place where there is a strong microwave field.352 Do not use the camera in a place where there is a strong infrared radiation.353 Do not use the camera in a place where there is a strong ultraviolet radiation.354 Do not use the camera in a place where there is a strong X-ray radiation.355 Do not use the camera in a place where there is a strong gamma radiation.356 Do not use the camera in a place where there is a strong neutron radiation.357 Do not use the camera in a place where there is a strong cosmic radiation.358 Do not use the camera in a place where there is a strong gravitational field.359 Do not use the camera in a place where there is a strong magnetic field.360 Do not use the camera in a place where there is a strong electric field.361 Do not use the camera in a place where there is a strong electromagnetic field.362 Do not use the camera in a place where there is a strong radio frequency field.363 Do not use the camera in a place where there is a strong microwave field.364 Do not use the camera in a place where there is a strong infrared radiation.365 Do not use the camera in a place where there is a strong ultraviolet radiation.366 Do not use the camera in a place where there is a strong X-ray radiation.367 Do not use the camera in a place where there is a strong gamma radiation.368 Do not use the camera in a place where there is a strong neutron radiation.369 Do not use the camera in a place where there is a strong cosmic radiation.370 Do not use the camera in a place where there is a strong gravitational field.371 Do not use the camera in a place where there is a strong magnetic field.372 Do not use the camera in a place where there is a strong electric field.373 Do not use the camera in a place where there is a strong electromagnetic field.374 Do not use the camera in a place where there is a strong radio frequency field.375 Do not use the camera in a place where there is a strong microwave field.376 Do not use the camera in a place where there is a strong infrared radiation.377 Do not use the camera in a place where there is a strong ultraviolet radiation.378 Do not use the camera in a place where there is a strong X-ray radiation.379 Do not use the camera in a place where there is a strong gamma radiation.380 Do not use the camera in a place where there is a strong neutron radiation.381 Do not use the camera in a place where there is a strong cosmic radiation.382 Do not use the camera in a place where there is a strong gravitational field.383 Do not use the camera in a place where there is a strong magnetic field.384 Do not use the camera in a place where there is a strong electric field.385 Do not use the camera in a place where there is a strong electromagnetic field.386 Do not use the camera in a place where there is a strong radio frequency field.387 Do not use the camera in a place where there is a strong microwave field.388 Do not use the camera in a place where there is a strong infrared radiation.389 Do not use the camera in a place where there is a strong ultraviolet radiation.390 Do not use the camera in a place where there is a strong X-ray radiation.391 Do not use the camera in a place where there is a strong gamma radiation.392 Do not use the camera in a place where there is a strong neutron radiation.393 Do not use the camera in a place where there is a strong cosmic radiation.394 Do not use the camera in a place where there is a strong gravitational field.395 Do not use the camera in a place where there is a strong magnetic field.396 Do not use the camera in a place where there is a strong electric field.397 Do