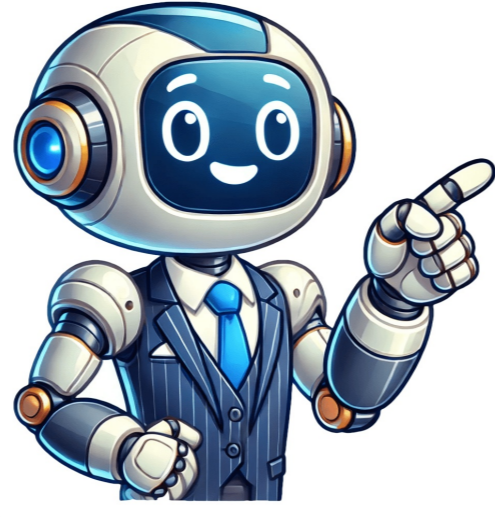


Continue





Check our troubleshooting guide before requesting service: First, try cleaning your earpieces and ensuring a proper fit for optimal audio performance. For charging issues, click here to troubleshoot. If your earbuds constantly fall out, check this link for possible solutions. Still experiencing problems? Submit a service request. Repair costs vary depending on the extent of damage. Factors like corrosion, environmental exposure, or previous repair attempts can significantly impact prices. We recommend discussing the issue before proceeding with repairs. Send the affected part, such as the circuit board, or describe it to us, and we'll assess its condition and provide a quote. Please call first for inquiries and check our CONTACT page for more information on which models are repairable. Given text here Sorry, no spare parts available. The KN series keyboards might be salvageable but need the entire keyboard unit. The SM-AC1200 probably needs the whole unit as well. For the Technics silent piano retrofit for acoustic pianos, I can fully test and repair the main board, which is a crucial component that I've tested using my own prototype setup. I have successfully repaired a main board from a 2016 model, so this shouldn't be an issue. However, please note that the contact boards used in this retrofit are not well-documented, and I'll need to use my own stock for repairs. If you're looking at the P30 or P50 stage pianos, I can usually repair their boards and keyboard assembly. It's essential to warn anyone who owns one of these models about a potential issue: if the pedal lead gets damaged, it can cause severe damage to the main board, which is very expensive and often irreparable. A simple modification can prevent this from happening, but it requires specialized knowledge and parts that are becoming increasingly difficult to obtain. If you bring your amplifier board or top part for the piano here, I'll do the necessary work at no extra cost. In contrast, some models like PR602-PR904 require a more extensive refurbishment, which needs to be done properly to last. Any model with dead or intermittent notes requires the top of the piano here, as spare boards are not available anymore. If you're too far away or outside the UK, please send your contact boards and contacts for repair, cleaning, and testing. This involves disassembling the keyboard assembly and contact boards before reassembling everything afterwards. Keep in mind that explaining how to do this takes a lot of time, and I'd rather spend it on doing the job myself. You'll either need to figure out how to remove and replace parts yourself or, if you require assistance, I'll provide a quote for explaining the process. Okay? ALL MODELS WITH BLACK PLASTIC BOXES PROTRUDING UNDERNEATH To avoid damaging these boxes, place packing underneath when transporting the top of your piano. Models like PR602, PR603, and more recent ones are unlikely to have speaker issues. The amplifier board is usually the cause of distorted sound or strange noises. For PC6, PC10, and similar models, I can test and repair the main/amplifier board (just one in these cases). NOTE - be careful not to hit the volume control knob located under the front left corner when transporting the top of your piano. Take care not to rest it on this knob by placing packing underneath. Models like PR1 Grand Piano, PC100, and some older PR models might require the top of the piano here for repairs. I can test and usually repair contact problems on these models. If buzzy, distorted sound, please bring the speaker box if any. PR603, PR703, PR903: Can test and usually repair main and amplifier boards; need piano top access for other repairs. PR1000: Similar to PR903. NP10: Unknown model, no experience with it. PR54: Only test and repair amplifier board; need piano top access for other repairs. PR604, PR804: Test and repair amplifier board; can test main boards but haven't had to repair them yet; need piano top access for other repairs. PX series digital pianos (in order of production): PX1, PX4, PX5, PX6, PX7, PX9: Too old, not familiar with them. PX20, PX30, PX33v, PX44, PX55, PX66: Can test most main and amplifier boards; need piano top access for other repairs. May not repair main boards unless simple issue; if buzzy or distorted sound, also bring speaker box. PX55, PX66: Contact problems on some models with serial numbers xxxCxxxx can be repaired; earlier membrane contact models (xxxAxxxx and xxxBxxxx) cannot. PX70, PX71, PX73, PX74: Test main and amplifier boards; need piano top access for other repairs. May not repair main boards unless simple issue; if buzzy or distorted sound, also bring speaker box. PX101, PX103, PX106, PX107: Can test and usually repair main and amplifier boards; need piano top access for other repairs. If buzzy or distorted sound, also bring speaker box. PX100: Need piano top access. PX111: Test and usually repair main and amplifier boards; need piano top access for other repairs. PX201, PX203, PX204, PX205, PX206, PX207, PX208: Can test and usually repair main and amplifier boards; need piano top access for other repairs. PX220, PX222, PX224, PX226, PX228: Test and usually repair main and amplifier boards; need piano top access for other repairs. All PX models (except PX1-9) require cheap modifications to prevent severe damage to the main board if pedal lead gets crunched; new pedal cable will not fix the issue. Amplifier board also needs modification to reduce likelihood of blown amplifiers and speakers. Warn anyone who owns one of these models about this issue. PX335 PX336 PX338 and PX552 PX554 Pianos Need Urgent Attention These piano models require immediate attention due to a high risk of severe damage caused by a faulty pedal lead. Installing a new pedal cable may not fix the issue, and in some cases, it can exacerbate the problem. Moreover, the amplifier board needs a cheap modification to prevent both amplifiers from blowing up and potentially damaging the speakers. Change the microswitch without disassembling the board is safer. Instead, remove the metal pedal assembly and send it to me. Early model pedal switches are no longer available, but you can swap them over. However, this isn't as easy as it seems. Don't attempt to unsolder or resolder switch wires, as this can damage the switch and there's no replacement. Damper (Sustain) Pedal potentiometers are also not available, so they need to be cleaned. Master Volume slide controls require cleaning too. Sometimes you can clean them with a tiny amount of WD40 sprayed from outside, but it doesn't work every time. Encoders - the rotary things like tempo encoders that go round and round forever - have no suitable replacement parts. The faulty encoder must be removed, cleaned, and replaced. IT IS NOT POSSIBLE TO CLEAN ENCODERS WITH WD40 FROM THE OUTSIDE!! You need to remove the circuit board it's mounted on, desolder, and then remove the encoder from the circuit board. Once removed, you can spray WD40 inside, rotate the shaft many times, clean off excess WD40, shake it to remove WD40 from inside, and clean that off. Then replace the encoder, resolder it, refit the circuit board, and hope the encoder works okay... a long job! I found an unsuitable replacement for later type encoders used by Technics. It works but the shaft is much too long. Tact switches - the small microswitches operating buttons - can't be cleaned and need to be replaced. I can supply more recent types of these. Pedal lever-operated microswitches also can't be cleaned and need to be replaced. I can supply more recent types of these as well. Due to 50% of my repairs coming from overseas, it's not possible for me to receive the top part of a piano. For those customers, we can do an initial fault check by email so they can send the correct board.

Technics digital piano repair service. Can digital pianos be repaired. Digital piano repair near me. Technics piano repair. Technics digital pitch.