



File Name: canon mv200 user manual.pdf

Size: 1407 KB

Type: PDF, ePub, eBook

Category: Book

Uploaded: 17 May 2019, 17:16 PM

Rating: 4.6/5 from 694 votes.

Status: AVAILABLE

Last checked: 2 Minutes ago!

In order to read or download canon mv200 user manual ebook, you need to create a FREE account.

[**Download Now!**](#)

eBook includes PDF, ePub and Kindle version

[**Register a free 1 month Trial Account.**](#)

[**Download as many books as you like \(Personal use\)**](#)

[**Cancel the membership at any time if not satisfied.**](#)

[**Join Over 80000 Happy Readers**](#)

Book Descriptions:

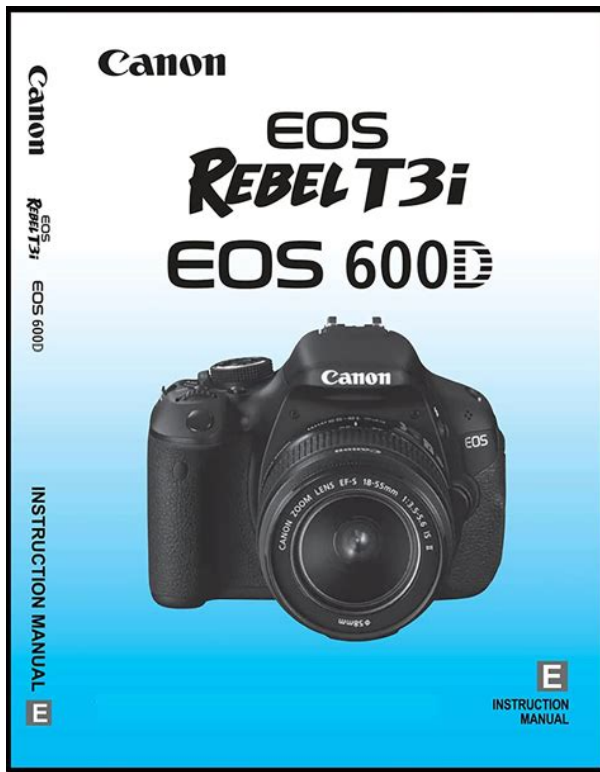
We have made it easy for you to find a PDF Ebooks without any digging. And by having access to our ebooks online or by storing it on your computer, you have convenient answers with canon mv200 user manual . To get started finding canon mv200 user manual , you are right to find our website which has a comprehensive collection of manuals listed.

Our library is the biggest of these that have literally hundreds of thousands of different products represented.



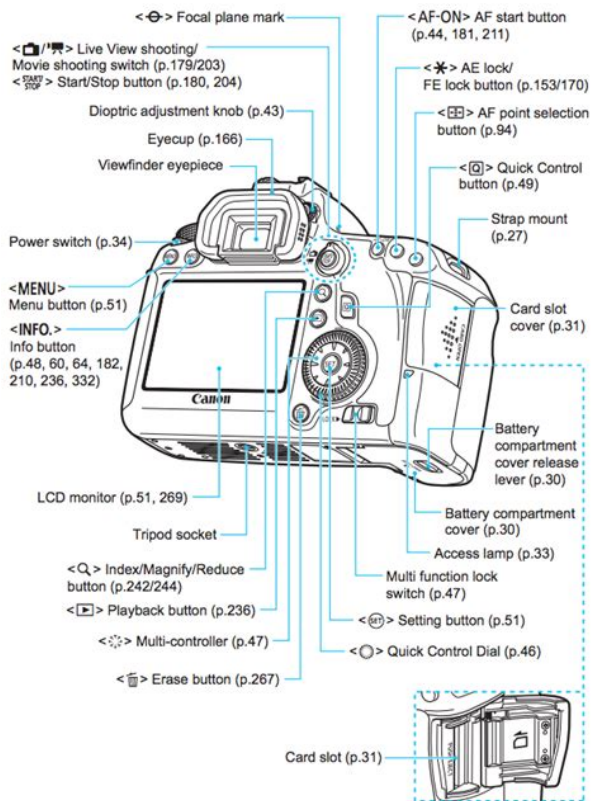
Book Descriptions:

canon mv200 user manual



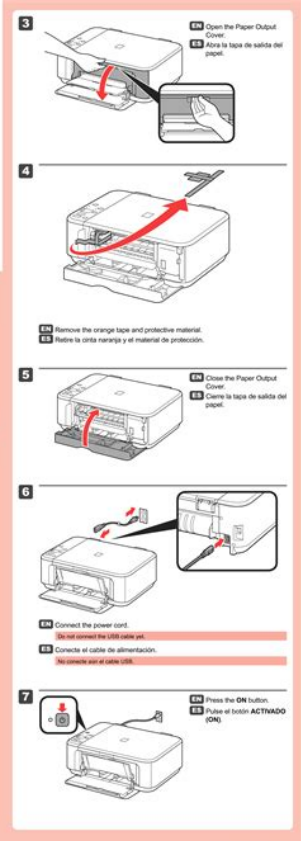
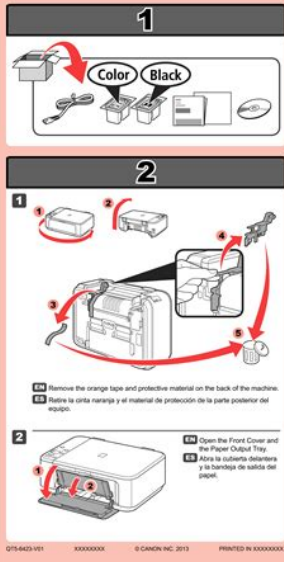
Please check your inbox, and if you can't find it, check your spam folder to make sure it didn't end up there. Please also check your spam folder. The pages are then spiral bound with a clear acetate front cover and red card back cover, held together with a strong white wire. Your manual will lay flat when open. This camcorder is also known as USA ULTURA. To participate you need to register. Registration is free. Click here to register now. For a better experience, please enable JavaScript in your browser before proceeding. It may not display this or other websites correctly. You should upgrade or use an alternative browser. By continuing to use this site, you are consenting to our use of cookies. Please try again. Please try your search again later. You can edit your question or post anyway. If you are a seller for this product, would you like to suggest updates through seller support Amazon calculates a products star ratings based on a machine learned model instead of a raw data average. The model takes into account factors including the age of a rating, whether the ratings are from verified purchasers and factors that establish reviewer trustworthiness. Learn more opens in a new window or tab This amount is subject to change until you make payment. For additional information, see the Global Shipping Programme terms and conditions opens in a new window or tab This amount is subject to change until you make payment. If you reside in an EU member state besides UK, import VAT on this purchase is not recoverable. For additional information, see the Global Shipping Programme terms and conditions opens in a new window or tab Learn More opens in a new window or tab Learn More opens in a new window or tab Learn More opens in a new window or tab Learn More opens in a new window or tab See the sellers listing for full details. <http://misakieducation.com.np/userfiles/dsc-f707-sony-manual.xml>

- 1.0.



You're covered by the eBay Money Back Guarantee if you receive an item that is not as described in the listing. Find out more about your rights as a buyer opens in a new window or tab and exceptions opens in a new window or tab. Contact the seller opens in a new window or tab and request post to your location. Please enter a valid postcode. Please enter a number less than or equal to 1. We may receive commission if your application for credit is successful. Terms and conditions apply. Subject to credit approval. We may receive commission if your application for credit is successful. All Rights Reserved. User Agreement, Privacy, Cookies and AdChoice Norton Secured powered by Verisign. This Canon optical zoom lens perfectly transforms distant subjects into dramatic closeups with absolutely no loss in image quality. The digital zoom extends the magnification to an amazing 320x, revealing details too distant to be seen with just the eye alone. The scope from wide panorama to super telephoto is outstanding. The Canon ULTRARA also features Optical Image Stabilizer. Canons optical expertise produced the finest method of image stabilization available. It optically corrects camera shake so the video always looks smooth, steady and natural whether shooting handheld at full telephoto or even from a moving vehicle. Unlike the electronic method on other models, the optical method is the perfect complement to the outstanding picture quality of DV and offers superior shake reduction, especially when light levels are low. Page Count 2 Color Filter This supplemental set of instructions describes additional features specific to your Ikelite Video Cases are slightly negative in salt water for stability. This housing has. Lens Switch. Port. Mirror. Joy Stick. Orings last several years if properly Joy Stick. Base. SuperEye. Stop. During transportation, please remember to close the mirror by pressing it against The external mirror is hinged so that it can be opened to reflect. <http://www.aeroklub-jihlava.cz/userfiles/dsc-escort-user-manual.xml>

Video Tutorial Available Se dispone de tutoriales en video
www.usa.canon.com/FAQVideo

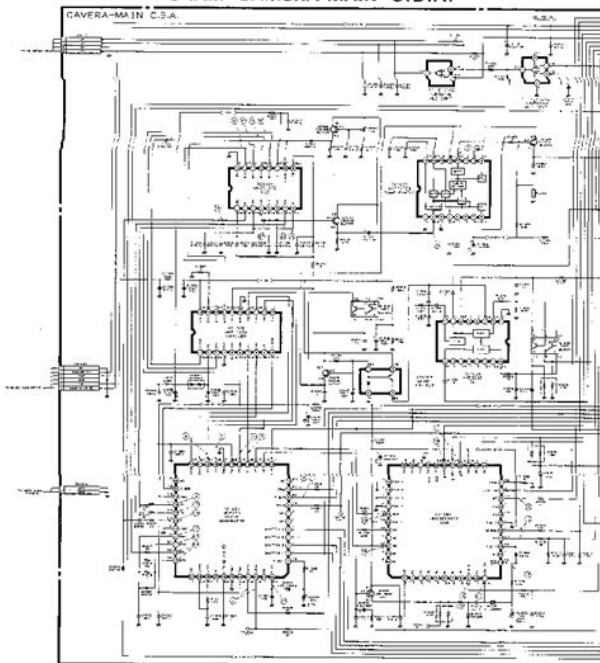


The image is reversed in the LCD display. Looking in the mirror, Right is Left, LeftZoomThe lens threads are very fine. DO NOT cross thread. It should screw on very easily. If it is difficult to turn, you areBottom Bar. White Balance, Image Effect. The lens port on the front of the housing accepts the optional wide angle lenses. These waterproofCanon NB2LH, BP2L13. The program selector on the camera MUST be in the 1P2 position for the focus lockFor best results, moveChart shows recommendedFocus. Exposure. Lens Cover SwitchP Auto Mode. P Auto Mode. P Open. Initially set the white balance to Auto. Use the touch screen controls on theFor 1580 foot depth, set white balance to Outdoor. V i d e o L i t e When using optional Video Lite at NIGHT, set the camera white balanceDuring the DAY, use the Outdoor setting for subjects beyondO'ring. Back Plate. The camera mounts to the tray,Position the camera against the twoThe camera should fit easily on the trayStabilizing. Pins. Camera Tray. Camera Mounting Bolt. Check that the oQring is clean andOnce the camera is mounted to the tray as shown above, pull the housingSlowly slide the camera. As the camera slides into theD O N O T force this installation; the camera and tray should slide easily intoIn this position the lid snaps can be positioned over the lid hooks on the housingSlide the housing controls back in place making sure they properly align with theOperate each control to see how it works with the camera. Some controls such as. Other controls may seldom be utilized. Refer toOtherwise, the cord may interfere with the housing seal. If the housing controls are not properly positioned,File Type Extension pdf. PDF Version 1.4. Linearized No. Page Count 2. X Press Private %%DocumentProcessColors Cyan Magenta Yellow Black.%%EndComments. Creator QuarkXPressR 7.31. Create Date 20081211 130451. Producer QuarkXPressR 7.31. Title. Author. Subject.

When you load a tape that is initially well around the head drum gefaedelt, but then right back with an error, s.die I no longer remember 2nd attempt, I do not because the tape suffers ausgefaedelt again and finally with the tape heraushaengendem tape ejected. On my SONY DVCam, I have observed that when answering and leaving the band and synonymous without a tape to wrap a little tape will be rotated. The Canon is not the case. So that I have the suspicion that anything with the tape winding motor is not true although we hear an engine and highexpire again, but it moves just nothing. Can it be that synonymous with this small camcorder ausleiernde belts are installed. The

Camera is about five years old, I guess. I would first have to help a service manual of the MV3 MC Elura or identical to MC. Who has such and it may be me as a pdf available As a radio with some Feinmechanikerfahrung so I would have confidence in the repair but without the manual, this is a boeser flying blind. I would be glad if someone a few tips and clues to the problem could be reported. This speaks either to a defect or s. Antriebsmotor for a ausgetauschten or cracked belts. A service manual, I unfortunately do not like this camcorder model. Manual fur Grundig Fernseher Typ ST 70200 IDTV Canon C300 MK II und Tamron 2470 Problem Problem mit Elektronik von Canon MV200 nach FireWire Anschlu. Canon behebt C300 Mark2 Ghosting Problem mit neuer Firmware Sony PMW 400 mit Canon HJ40fach Zoom Power Problem Camcorder Service Fujifilm Service LTO Service in Deutschland Suche Kamera Reparatur Service PayPal Email List Service GX80 wie ins service menu. Xinegear wird zertifiziertes RED Digital Cinema Service Center in Berlin Sachtler Vinten Service VITEC Sehr teuer und keine Kulanz beim ACE Stativ Canon Roadmap 2017 4K Canon EOS C100 MK III zur NAB. Keep this manual in a safe place for quick reference in the event a question arises. Manual Name Manual No.

SCHEMATIC DIAGRAM CAMERA-MAIN C.B.A.



01 May, 1991

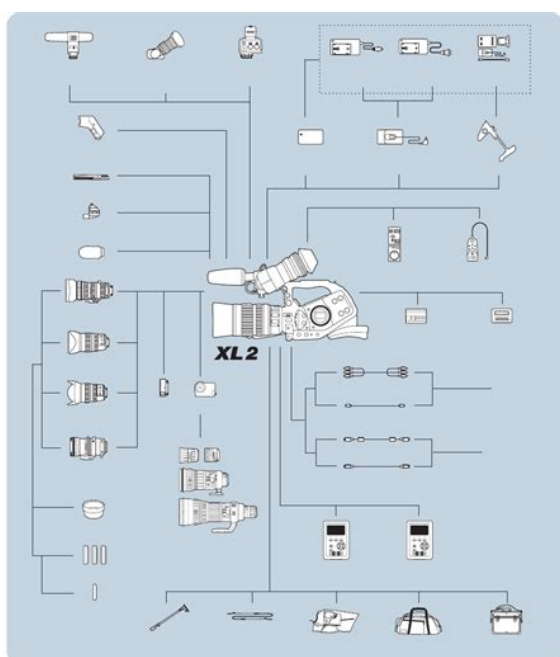
<http://schlammatlas.de/en/node/17451>

Description MV100 User's Manual IM MV10001E Explains all functions and procedures of the MV100 excluding the communication functions. MV200 User's Manual IM MV20001E Explains all functions and procedures of the MV200 excluding the communication functions. Fieldbus IM 04L02A0118E Explains the communication functions Communication of the FOUNDATION Fieldbus interface. DAQSTANDARD IM 04L02A0161E Describes the functions and operating procedures of DAQSTANDARD. The contents of this manual are subject to change without prior notice as a result of continuing improvements to the instrument's performance and functions. The figures given in this manual may differ from the actual screen. Every effort has been made in the preparation of this manual to ensure the accuracy of its contents. However, should you have any questions or find any errors, please contact your nearest YOKOGAWA dealer as listed on the back cover of this manual.

Copying or reproducing all or any part of the contents of this manual without YOKOGAWA's permission is strictly prohibited. Modbus is a registered trademark of AEG Schneider Automation Incorporated. Adobe and Acrobat are trademarks of Adobe Systems incorporated. Other company and product names are trademarks or registered trademarks of their respective holders. First edition March 2000 Fourth edition February 2002 Second edition September 2000 Third edition February 2001 Disk No. RE25 4th Edition February 2002YK All Rights Reserved, Copyright 2000 Yokogawa Electric Corporation

Chapter 1 Overview of the Communication Functions Describes the relationship between the communication functions and the interface and provides an outline of the communication functions. Chapter 2 Using the Ethernet Interface Describes the specifications and setup procedures of the Ethernet interface. Describes the FTP client function, Web server function, and transmission function. Also describes how to display the log screen.

<https://fufolia.com/images/bush-stb202x12-manual.pdf>



Chapter 3 Using the Serial Interface Option Describes the functions, specifications, and setup procedures of the serial interface option. Chapter 4 Using the Modbus Protocol Describes the specifications and setup procedures of the Modbus protocol and the status indication screen of the Modbus master. Chapter 5 Commands Describes each command that can be used. Chapter 7 Status Report Describes the status information. Appendix Provides an ASCII character code table, the flow of operation when outputting data from MV, a list of error messages, and the login process. Index Provides an index. Conventions Used in this Manual Unit k Denotes Example 5 kg, 100 khz K Denotes Example 720 KB Storage capacity of floppy disks Symbols The following symbols are used in this manual. Affixed to the instrument. Indicates danger to personnel or instrument and the operator must refer to the User's Manual. The symbol is used in the User's Manual to indicate the reference. WARNING Describes precautions that should be observed to prevent injury or death to the user. CAUTION Describes precautions that should be observed to prevent minor or moderate injury, or damage to the instrument. Symbols used on pages describing operating procedures On pages that describe the operating procedures in Chapter 2 through 4, the following symbols are used to distinguish the procedures from their explanations. Explanation This section describes the setting parameters and the limitations regarding the procedures. Procedure Follow the steps

indicated with numbers. The procedures are given with the premise that the user is carrying out the steps for the time. Depending on the operation, not all steps need to be taken. iii. Arrow keys Press these keys to move between the setup items displayed on the screen. Soft keys Press these keys to select the menu displayed on the screen.

<https://grovehilloutfitters.com/images/bush-television-manuals.pdf>



MENU and FUNC key After pressing the MENU key, pressing the FUNC key for approximately 3 s displays the setup menu that is used to enter the communication configuration menu. MV200 LCD monitor ESC key Press this key to return to the previous screen or cancel the new settings. Arrow keys Press these keys to move between the setup items displayed on the screen. Soft keys Press these keys to select the menu displayed on the screen. MENU and FUNC key After pressing the MENU key, pressing the FUNC key for approximately 3 s displays the setup menu that is used to enter the communication configuration menu. iv Comes standard with the instrument. MV200 Ethernet interface connector A connector used for Ethernet communications. Comes standard with the instrument. Settings related to communications are configured in the basic setting mode. The procedure used to enter the basic setting mode is described in the procedure for each item. The parameter box containing the cursor is blue. 2. For parameters whose selections are shown at the bottom of the screen, press the soft key under the desired selection. The boxes containing parameters that have been changed are displayed in yellow. The new changes are confirmed and the yellow parameter boxes change to white. The cursor returns to the parameter at the upper left portion of the screen the first parameter on the screen. However, if the new change is not valid, then the parameter box turns red. Parameters for which the new changes that are not valid are displayed in red. vi A window appears for you to confirm the cancellation. App4 Output Flow of FIFO Data. App6 Data Dropout Modbus Master. App8 A List of Error Messages. App9 Login Process. App16 App Index ix. In order to use the various communication functions of the MV, the Ethernet or serial communications must be configured beforehand.

Proprietary protocol for the MV Modbus slave protocol Modbus master protocol 11 For the Modbus function codes that are supported by the MV, see section 4.1. This function can be used only when communicating via the serial interface option. For the settings required to use the functions, see section 4.4. Modbus master device Data from slave device Serial communication MV Modbus master Modbus slave device Loads the measured data of other instruments using the Modbus protocol. Function for writing data to other instruments is not supported. For details on the Modbus function codes that are supported, see section 4.1. This function can be used only when communicating via the serial interface option. For the settings required in using this function, see section 4.4 and 4.5. Modbus master device MV Data from slave device Serial communication Modbus slave device 12.

The following types of data can be output. Data in the internal memory or files in the external storage medium. Setup information and the status byte. For other types of data, ASCII format is used. For the data output format, see chapter 6. The communication commands that can be used through this function are setting commands see sections 5.4 and 5.5, basic setting commands see sections 5.6, and output commands see sections 5.7 to 5.9. This function can be used when communicating via the Ethernet or the serial optional interface. For the configuration required to use this function, see sections 2.3 and 2.7. FTP server You can use a PC to access the MV via FTP. You can perform operations such as retrieving directory and file lists from the external storage medium of the MV and transferring and deleting files. This function can be used only when communicating via the Ethernet interface. For the configuration required to use this function, see sections 2.3 and 2.7. PC Files on the storage medium Ethernet FTP server MV 13 The result of the transfer is recorded in the FTP log.

<http://lisahyatthealth.com/wp-content/plugins/formcraft/file-upload/server/content/files/16272313f4b483---breadman-tr-550b-manual.pdf>

If the primary server is down, the file is transferred to the secondary server. For the configuration required to use this function, see sections 2.3 and 2.5. FTP test The file transfer can be checked by transferring a test file from the MV to a remote FTP server. The result of the FTP test can be confirmed on the FTP log screen. For the configuration required to use this function, see section 2.6. Instrument information server The serial number and model of the MV connected to Ethernet can be output. The communication commands that can be used through this function are instrument information output commands see section 5.11. This function can be used only when communicating via the Ethernet interface. For the configuration required to use this function, see section. Up to seven names can be registered. You will also specify the access authority see below when registering the name. There are limitations on the number of simultaneous connections or simultaneous uses of the MV from the PC see section 2.1. Granting access authority This function provides access authority user level to operate the MV for the registered users. For example, this prevents user B user level from changing the measurement conditions that were set by user A administrator level. There are two user levels on the MV, user and administrator. One administrator and six users can be registered. Measurement and setup data can be output. The connection between the PC that the user is operating and the MV can be disconnected. Limitations on the use of the FTP server You cannot save files to the external storage medium of the MV or delete files on it. Files can be retrieved from the server. Communication timeout This function drops the connection if no data transfer is detected between the PC and the MV over a predetermined period of time. This applies to data transfer at the application level only see section 1.1.

For example, this function prevents a PC from being connected to the MV indefinitely which would prohibit other users from making new connections for data transfer. 15 The MV screen can be displayed on the browser applications of Microsoft Internet Explorer. The following two screens are available Monitor page Screen dedicated for monitoring. Operator page You can switch the MV screen. You can also modify and write messages. You can set access control user name and password on each page. The following information can be displayed. Transmitting messages can be automatically transmitted at the following times. You can specify two groups of destinations and specify the destination for each item. In addition, you can set a header string for each item. During recovery from a power failure Notifies the time of the power failure and the time of recovery. When an error related to the external storage medium and FTP client occurs Notifies the error code and message when an error is detected on the external 16 In addition, notifies the error code and message such as when data transfer fails using the FTP client function. At the specified time Transmits an message when the specified time is reached. It can be used to confirm that the system including the network and the transmission function is working properly. You can specify the

reference time and the transmission interval for each destination. You can confirm the result of the transmission test on the log screen. For the procedure in using this function, see section Other functions Confirming the connection status of the Ethernet interface The connection status of the Ethernet interface can be confirmed on the rear panel and on the screen of the MV. For the display position and the meaning of the indicator, see section 2.4. Keepalive Extended function of TCP This function forcibly drops the connection if there are no responses to the test packets that are sent periodically at the TCP level.

For the configuration required to use this function, see section For details, see Granting Access Authority in section Ethernet interface connector 10BASE-T straight cable Multiple devices can be connected by using a hub. MV HUB Ethernet interface connector PC MV 10BASE-T straight cable Ethernet cable When connecting to a preexisting network The following figure illustrates an example in which the MV and a PC are connected to the network. When connecting the MV or the PC to a preexisting network, the transfer rate, connector type, etc. Network 10BASE-T straight cable Ethernet interface connector Adapters that support the 10BASE-T hubs and routers, for example PC MV Ethernet cable Note Depending on the reliability of the network or the volume of network traffic, all the transferred data may not be retrieved by the PC. Communication performance deteriorates if multiple PCs access the recorder simultaneously. 22 IP address Set the IP address to assign to the MV. The address is a 32-bit value normally expressed with four values 0 to 255, each separated by a period as in Subnet mask Specify the mask that is used to determine the network address from the IP address. The default setting is Set this value according to the system or the network to which the MV belongs. In some cases, this setting may not be necessary. Default gateway Set the IP address of the gateway router, etc. used to communicate with other networks. DNS server Set the address of the DNS server. The default setting is Up to two DNS servers can be specified primary and secondary. Host name Set the MV's host name using up to 64 alphanumeric characters. Domain name Set the network domain name to which the MV belongs using up to 64 alphanumeric characters. When the destination server of the file transfer or the server of the recipient is looked up using the DNS server, this domain name is appended to the host name as a possible domain name if it is omitted.

The destination name server name becomes the FTP server name see section 2.5 or the SMTP server name see section 2.11. 23 In this case, the domain suffix is specified, so that this domain name is searched after the domain name specified in the previous paragraph is searched. Set the domain suffix using up to 64 alphanumeric characters. Up to two domain suffixes can be specified primary and secondary. Since these commands cannot be used on Ethernet communications and serial communications simultaneously, you must select either one. Storing the settings To activate the settings made in the basic setting mode, the settings must be saved. Otherwise, the settings return to the previous values. 24 22 Using the Ethernet Interface 2.3 Configuring the Ethernet Interface Procedure For the basic flow of operations, see Flow of Operation using the Operation Keys on page vi. Setting the subnet mask Set this value according to the system or the network to which the MV belongs. Setting the default gateway Set this value according to the system or the network to which the MV belongs. To cancel, press the ESC key. For detailed operations regarding confirmation and cancellation, see Flow of Operation using the Operation Keys on page vi. Setting the DNS Domain Name System Set the DNS, if you are using a host name to specify the destination server of the file transfer on an FTP client or the server of the recipient. If the DNS is not going to be used, go to step 39 for models with the serial communication function or step 41 for models without the serial communication function. Setting the primary DNS server address 19. Setting the secondary DNS server address Set this value when using the secondary DNS server in the system or the network to which the MV belongs. Setting the MV's host name 25. Setting the domain name to which the MV belongs 29. Setting the primary domain suffix Set this value when the domain suffix is necessary.

Setting the secondary domain suffix Set this value when the secondary domain suffix exists. Storing the new settings 42. Indicator On green Blinking green Off Connection Status of the Ethernet Interface The Ethernet interface is electrically connected. Transmitting data The Ethernet interface is not electrically connected. 2 Indicator Rear Panel Checking the connection using the recorder's screen Checking using the status display of the screen The connection status of the Ethernet interface can be checked using the indicator located on the right hand side of the status display section of the basic setting menu. The basic setting menu is displayed by pressing the FUNC key for approximately 3 s after pressing the MENU key to display the setting menu. Indicator On green Off Connection Status of the Ethernet Interface The Ethernet interface is electrically connected. The Ethernet interface is not electrically connected. Rear Panel Indicator Checking using the display section located at the upper right corner of the communication log screen The connection status of the Ethernet interface can be checked using the indicator located at the upper right corner of the communication log screen. For the procedures on how to display the communication log, see section 2.8. Indicator On green Off Connection Status of the Ethernet Interface The Ethernet interface is electrically connected. The Ethernet interface is not electrically connected. The default setting is Off. When the method to save the data is set to Auto, the data files are automatically transferred at appropriate times to the FTP destination described in the next section. Display data file Data files are automatically transferred at auto save intervals or at the specified date and time. Report data file Automatically transferred when reports are created. When the method to save the data is set to Manual, auto transfer does not take place. However, the report data file to be transferred is divided by every timeout.

If a file with the same name exists at the destination, the name of the transferred file is changed at the last character 8th character. The file with the same name at the destination is overwritten without any warning messages. Setting the FTP connection Confirm the settings such as the primary and secondary FTP servers, port number, login name, password, account, PASV mode, and initial path with your system or network administrator. Setting the primary and secondary servers Specify the primary and secondary file transfer destinations FTP servers as described in the previous close. When the DNS is being used, the host name can be used to specify the server name. For DNS settings, see section 2.3. You can also specify the IP address. In this case, DNS is not necessary. Port number Set the port number of the destination FTP server in the range from 0 to The default setting is 21. Login name Set the login name to use when accessing the FTP server. Up to 32 alphanumeric characters can be used. Password Set the password to use when accessing the FTP server. Account Set the account the ID number to use when accessing the FTP server. PASV mode When using the MV behind a firewall that requires the PASV mode, turn this mode On. A firewall is a security feature on a router which is used to prevent undesired intrusion into the network from outside parties. Initial path Set the destination directory for the file transfer using up to 64 alphanumeric characters. The directory delimiter varies depending on the FTP server. When the connection to the destination is recovered, the MV transfers the data files that were not transferred along with the new data file. However, due to the limitation of the internal memory, files that are overacquired before they are transferred are lost. Setting the FTP server name 11. Generally, the IP address is entered. Setting the FTP server's port number 15. Setting the login name used when accessing the FTP server 19.

Setting the password used when accessing the FTP server 23. Setting the account used when accessing the FTP server 27. Setting the initial path file transfer destination directory 33. RGA Ethernet Adapter. Control Center. for Ethernet Module All rights reserved. No With this machine refer to the metric version. The FS1118MFP model is applicable to Europe and Australasia. Introduction About Quick Installation Guide M73APO09380 User Manual. Version 1.2 All rights reserved. Reproduction without permission Each method is described in the following sections. NOTE If the EMail, Web Browser User's Guide ATS106. No part of All rights reserved. The

EdgeWave logo is a trademark of EdgeWave Inc. All other trademarks and registered Equipment The following equipment comes with the clock system RDSP3000ANIST Master Clock Module. A Communication protocol B Data packet Quick InstallationGuide All rights reserved. No part of this publication may be reproduced, transmitted, transcribed, User Guide WIRELESS WUSB54GR. Model No. WUSB54GR Copyright and Trademarks Specifications are subject to change without Please read this manual carefully before using Caution q s Indicates procedures Before using the instrument, please read this manual carefully. Some of the diagrams and You can access these features by selecting the items under COPYRIGHT This You can access these features by selecting the items CPEilte 7212. User Manual The information in this guide is intended to support you during the configuration of the franking PESA produces KXTDA0490 Thank you for purchasing a Panasonic 16Channel VoIP Gateway Card. Please read this manual carefully before using this product and save User s Guide Chapter 1 Overview of ServerView You can access these features by selecting the Broadband modem Verify That Basic Requirements Are Met Assure that the following requirements are met You have your broadband Internet service settings handy. Reproduction in whole or in part without permission is prohibited.

<http://eco-region31.ru/bosch-nexxt-300-repair-manual>